

URBANOASIS
BY
MISSONI

PENTHOUSES FLOOR PLANS

DAR
AL ARKAN
دار الأركان

LEVEL 2

3 BEDROOM

TOTAL AREA

178 sq.m / 1916 sq.ft

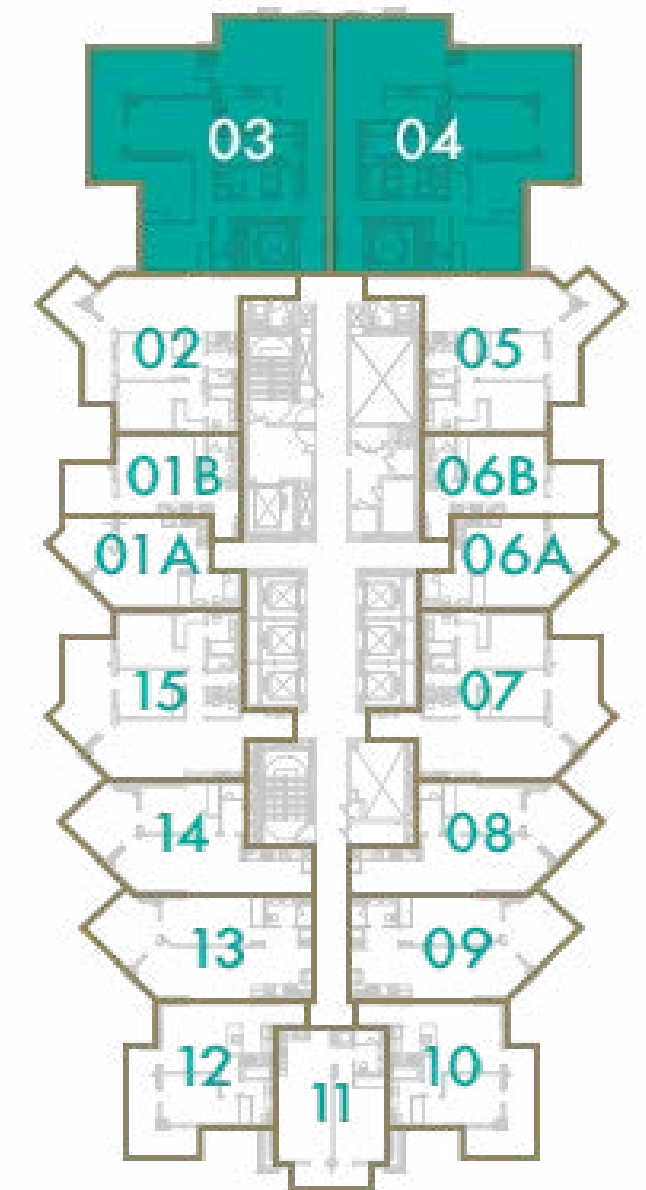
UNIT N^o

3 & 4

URBAN OASIS BY **MISSONI**



DUBAI CANAL



Disclaimer: All pictures, plans, layouts, information, data and details included in this brochure are indicative only and may change at any time up to the final 'as built' status in accordance with final designs of the project, regulatory approvals and planning permissions. All accessories and interior finishes such as wallpaper, chandeliers, furniture, electronics, white goods, curtains, hard and soft landscaping, pavements, features, gym, swimming pool(s) and other elements displayed in the brochure, or within the show apartment or between the plot boundary and the unit, are not part of the unit and are shown for illustrative purposes only.



DAR
AL ARKAN
دار الأركان

LEVELS 3 - 14

3 BEDROOM

TOTAL AREA

178 sq.m / 1916 sq.ft

UNIT N^o

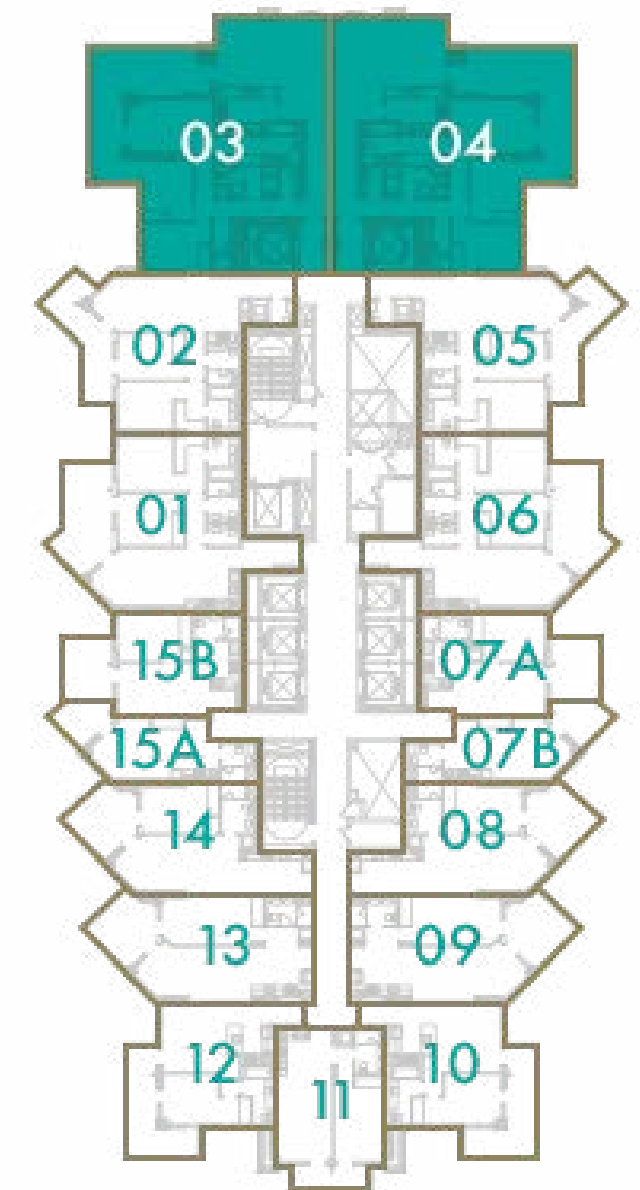
3 & 4

URBAN OASIS BY **MISSONI**

Disclaimer: All pictures, plans, layouts, information, data and details included in this brochure are indicative only and may change at any time up to the final 'as built' status in accordance with final designs of the project, regulatory approvals and planning permissions. All accessories and interior finishes such as wallpaper, chandeliers, furniture, electronics, white goods, curtains, hard and soft landscaping, pavements, features, gym, swimming pool(s) and other elements displayed in the brochure, or within the show apartment or between the plot boundary and the unit, are not part of the unit and are shown for illustrative purposes only.



DUBAI CANAL



DAR
AL ARKAN
دار الأركان

LEVEL 15

3 BEDROOM

TOTAL AREA

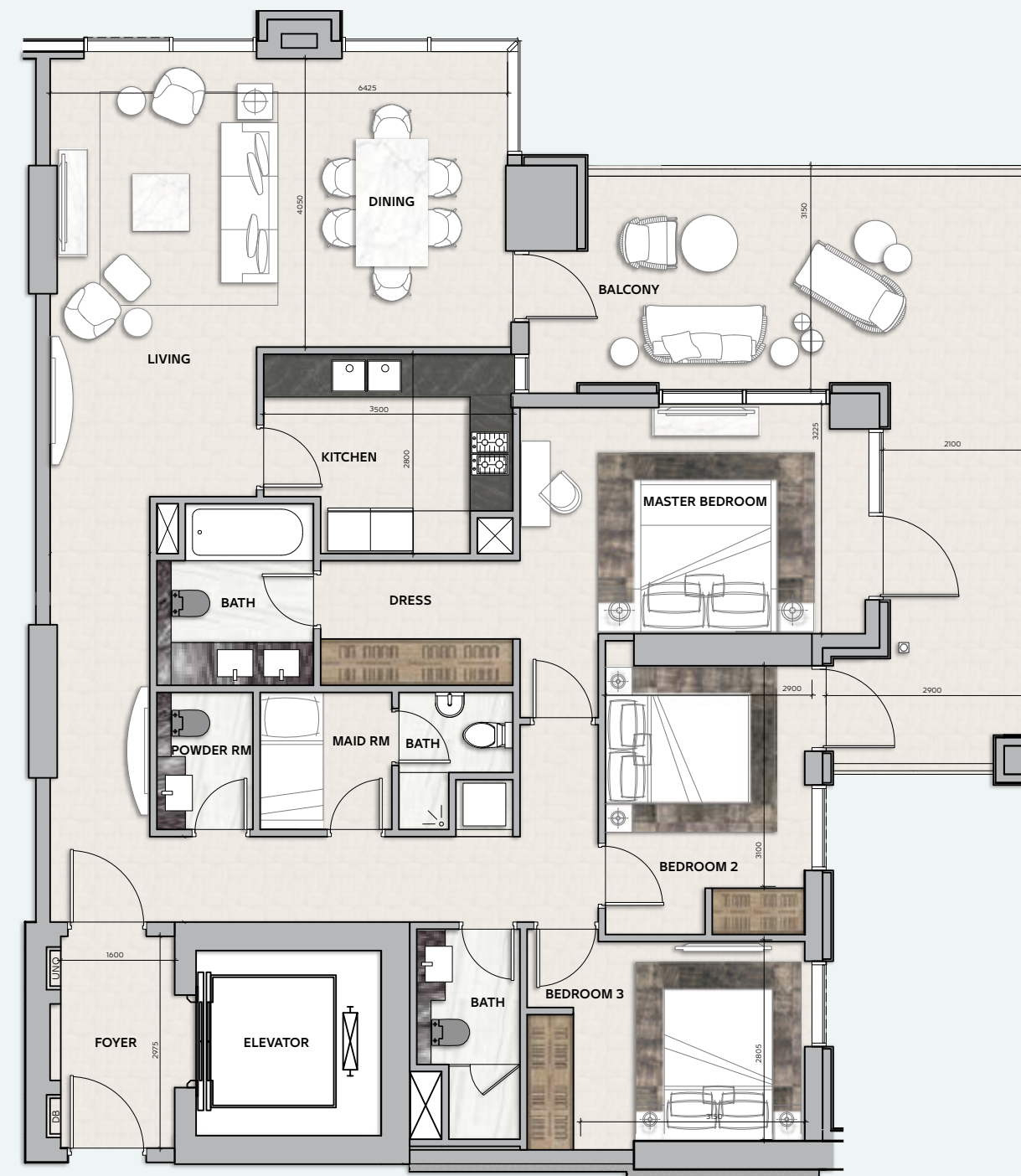
178 sq.m / 1916 sq.ft

UNIT N°

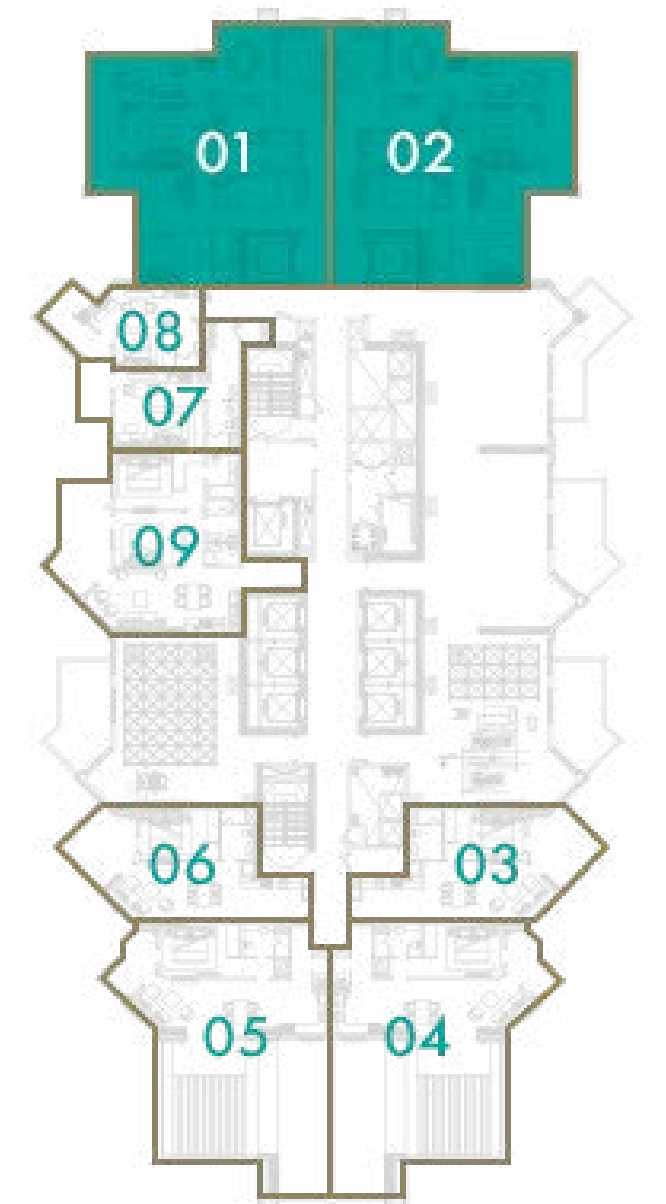
1 & 2

URBAN OASIS BY **MISSONI**

Disclaimer: All pictures, plans, layouts, information, data and details included in this brochure are indicative only and may change at any time up to the final 'as built' status in accordance with final designs of the project, regulatory approvals and planning permissions. All accessories and interior finishes such as wallpaper, chandeliers, furniture, electronics, white goods, curtains, hard and soft landscaping, pavements, features, gym, swimming pool(s) and other elements displayed in the brochure, or within the show apartment or between the plot boundary and the unit, are not part of the unit and are shown for illustrative purposes only.



DUBAI CANAL



DAR
AL ARKAN
دار الأركان

LEVELS 16 - 23

3 BEDROOM

TOTAL AREA

178 sq.m / 1916 sq.ft

UNIT N^o

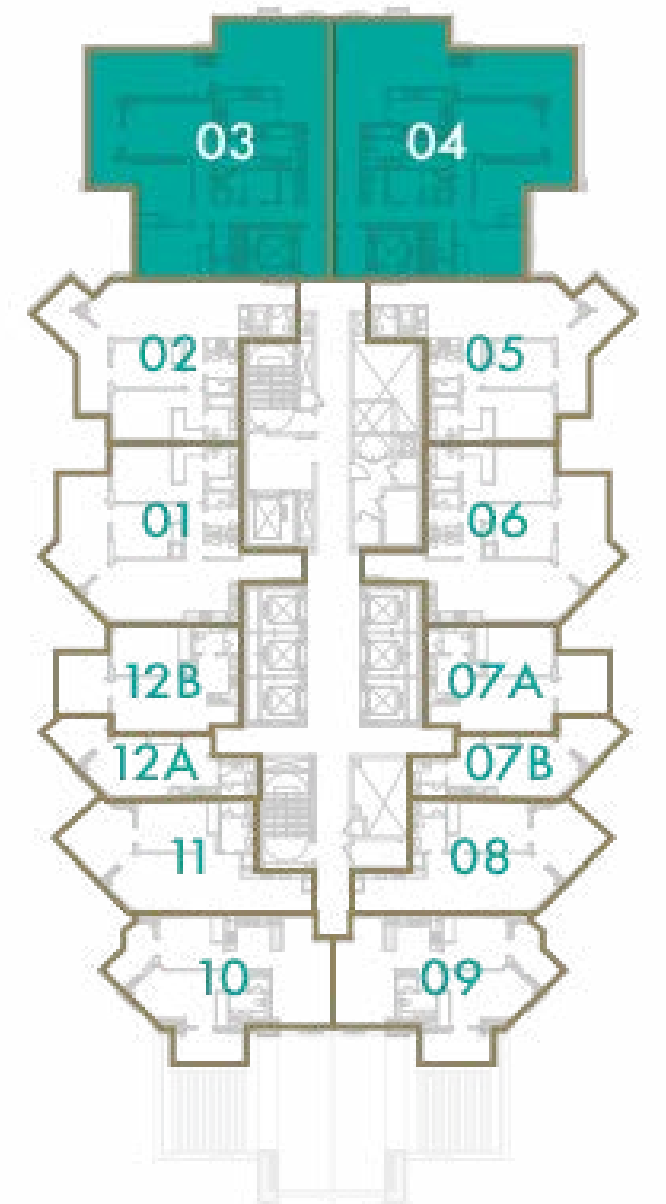
3 & 4

URBAN OASIS BY **MISSONI**

Disclaimer: All pictures, plans, layouts, information, data and details included in this brochure are indicative only and may change at any time up to the final 'as built' status in accordance with final designs of the project, regulatory approvals and planning permissions. All accessories and interior finishes such as wallpaper, chandeliers, furniture, electronics, white goods, curtains, hard and soft landscaping, pavements, features, gym, swimming pool(s) and other elements displayed in the brochure, or within the show apartment or between the plot boundary and the unit, are not part of the unit and are shown for illustrative purposes only.



DUBAI CANAL



DAR
AL ARKAN
دار الأركان

LEVEL 24

3 BEDROOM

TOTAL AREA

178 sq.m / 1916 sq.ft

UNIT N^o

3 & 4

URBAN OASIS BY **MISSONI**

Disclaimer: All pictures, plans, layouts, information, data and details included in this brochure are indicative only and may change at any time up to the final 'as built' status in accordance with final designs of the project, regulatory approvals and planning permissions. All accessories and interior finishes such as wallpaper, chandeliers, furniture, electronics, white goods, curtains, hard and soft landscaping, pavements, features, gym, swimming pool(s) and other elements displayed in the brochure, or within the show apartment or between the plot boundary and the unit, are not part of the unit and are shown for illustrative purposes only.



DUBAI CANAL



DAR
AL ARKAN
دار الأركان

LEVELS 25 - 29

3 BEDROOM

TOTAL AREA

178 sq.m / 1916 sq.ft

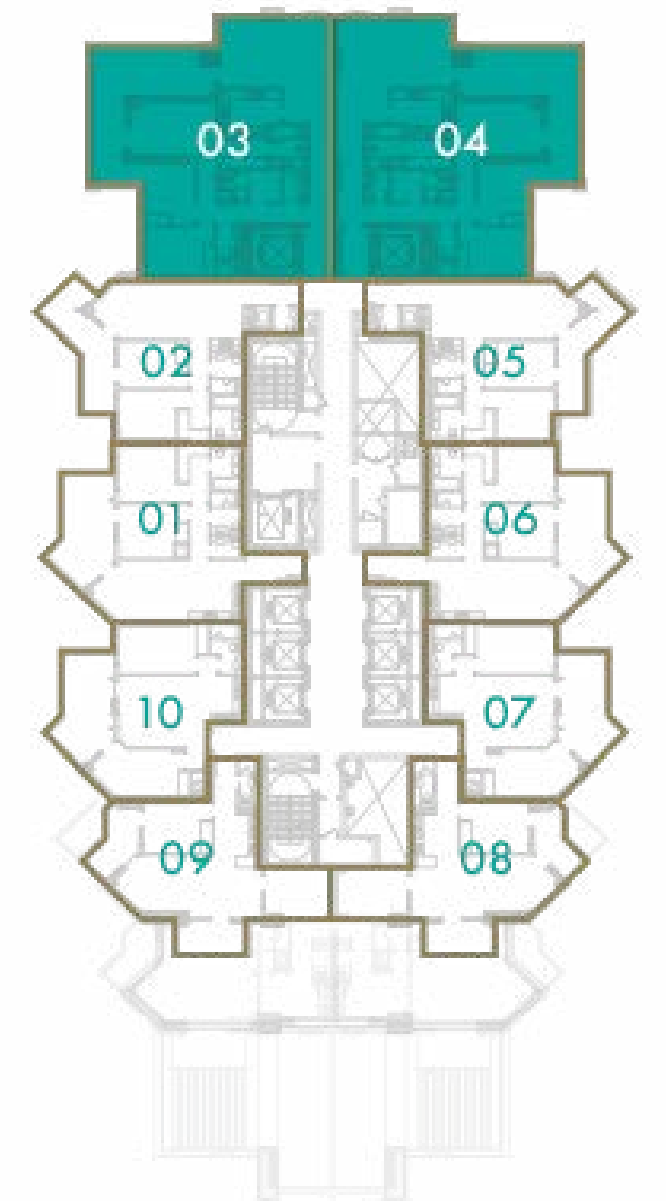
UNIT N^o

3 & 4

URBAN OASIS BY **MISSONI**



DUBAI CANAL



Disclaimer: All pictures, plans, layouts, information, data and details included in this brochure are indicative only and may change at any time up to the final 'as built' status in accordance with final designs of the project, regulatory approvals and planning permissions. All accessories and interior finishes such as wallpaper, chandeliers, furniture, electronics, white goods, curtains, hard and soft landscaping, pavements, features, gym, swimming pool(s) and other elements displayed in the brochure, or within the show apartment or between the plot boundary and the unit, are not part of the unit and are shown for illustrative purposes only.



DAR
AL ARKAN
دار الأركان

LEVEL 30

4 BEDROOM

TOTAL AREA

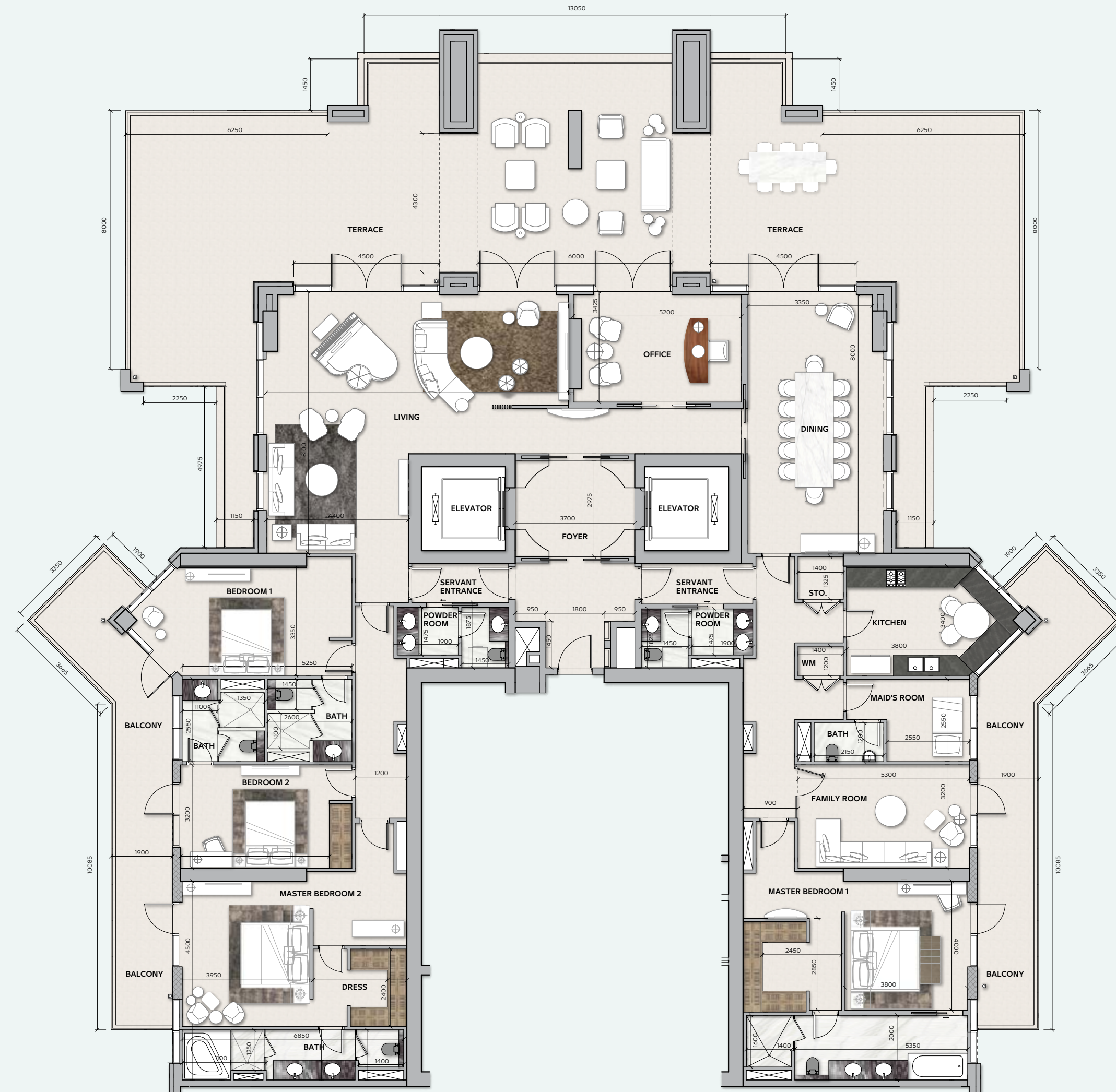
686 sq.m / 7385 sq.ft

UNIT N^o

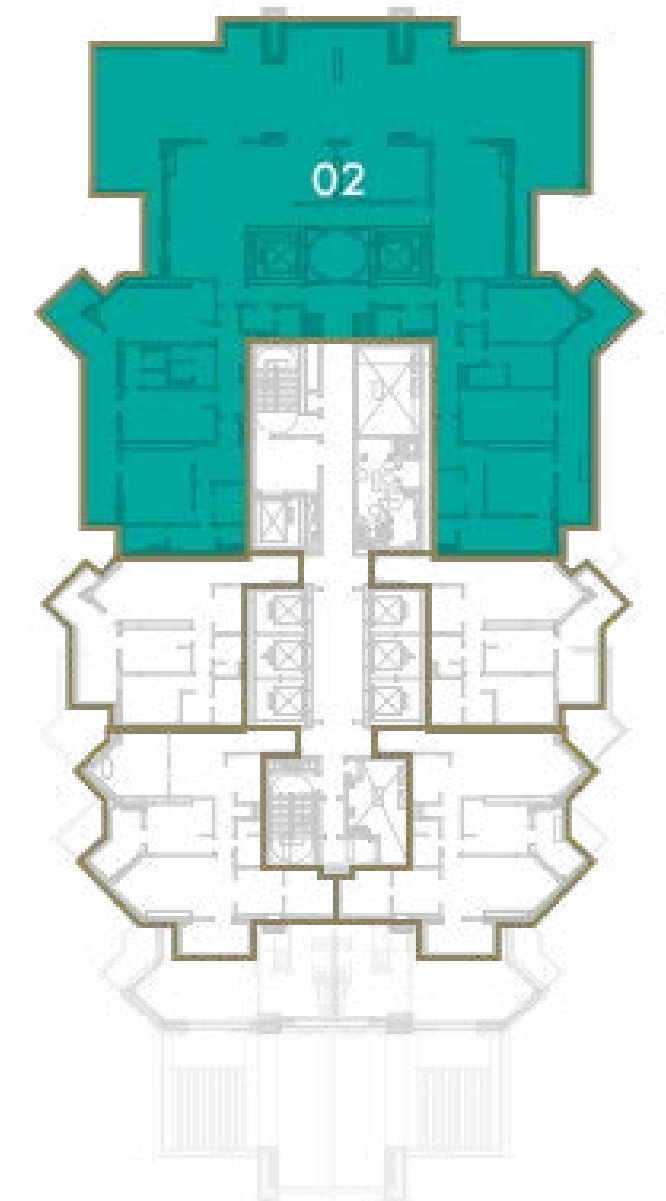
2

URBAN OASIS BY **MISSONI**

Disclaimer: All pictures, plans, layouts, information, data and details included in this brochure are indicative only and may change at any time up to the final 'as built' status in accordance with final designs of the project, regulatory approvals and planning permissions. All accessories and interior finishes such as wallpaper, chandeliers, furniture, electronics, white goods, curtains, hard and soft landscaping, pavements, features, gym, swimming pool(s) and other elements displayed in the brochure, or within the show apartment or between the plot boundary and the unit, are not part of the unit and are shown for illustrative purposes only.



DUBAI CANAL



DAR
AL ARKAN
دار الأركان

LEVELS 31 - 34

4 BEDROOM

TOTAL AREA

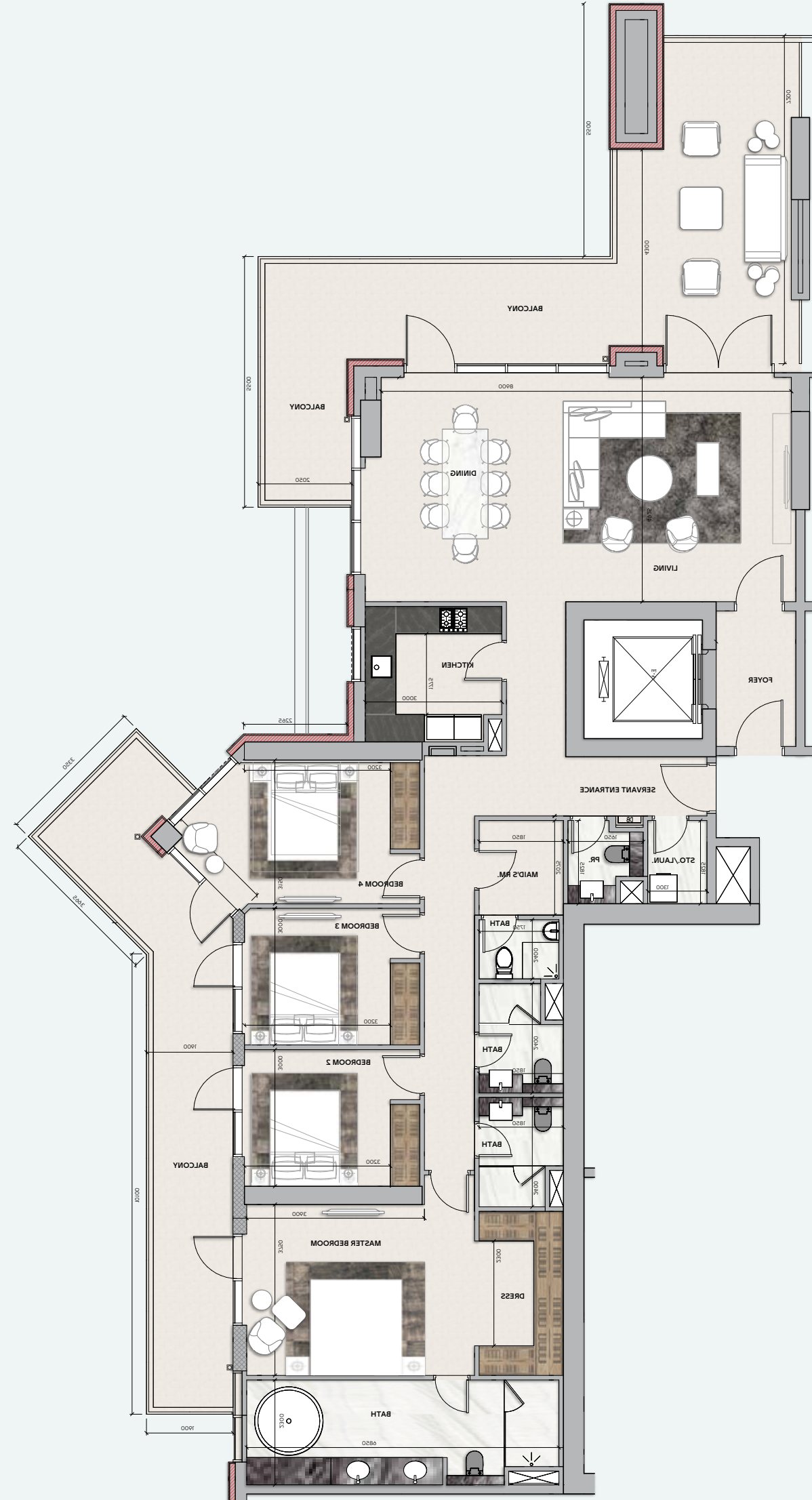
289 sq.m / 3113 sq.ft

UNIT N^o

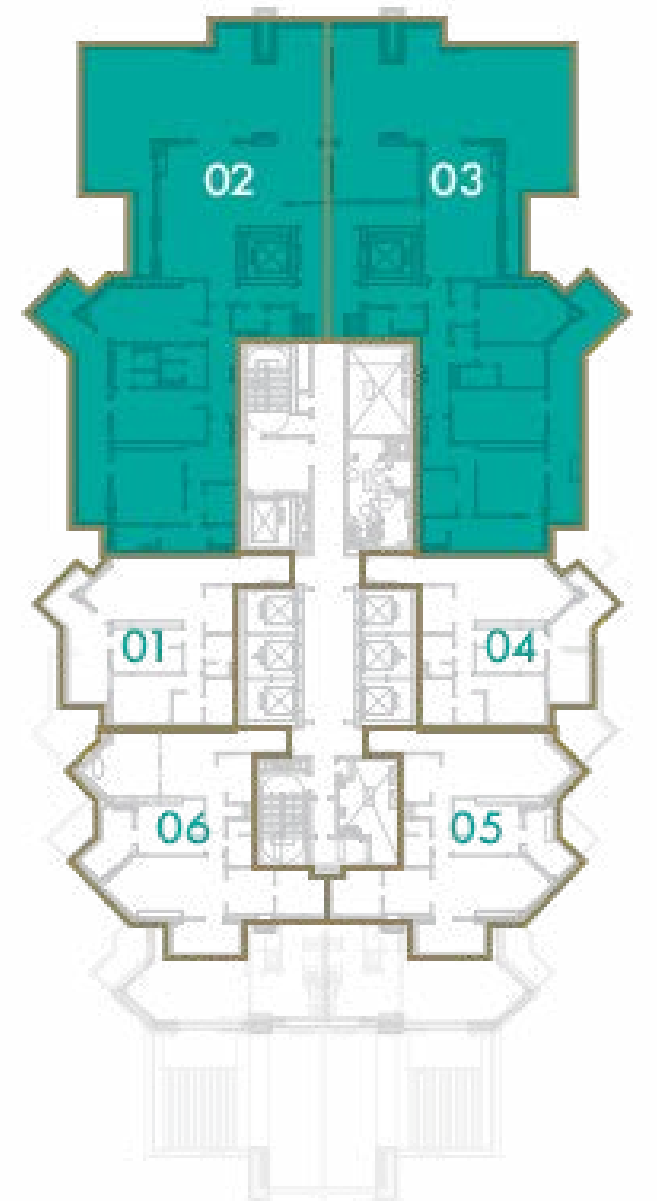
2 & 3

URBAN OASIS BY **MISSONI**

Disclaimer: All pictures, plans, layouts, information, data and details included in this brochure are indicative only and may change at any time up to the final 'as built' status in accordance with final designs of the project, regulatory approvals and planning permissions. All accessories and interior finishes such as wallpaper, chandeliers, furniture, electronics, white goods, curtains, hard and soft landscaping, pavements, features, gym, swimming pool(s) and other elements displayed in the brochure, or within the show apartment or between the plot boundary and the unit, are not part of the unit and are shown for illustrative purposes only.



DUBAI CANAL



haus&haus

For more information or to book a viewing tour get in touch
with our Off Plan & Investment team today:

+971 4 302 5800

info@hausandhaus.com

www.hausandhaus.com

'Agency of the Year 2020 Dubai' – Voted by  **bayut** and  **dubizzle**