

# ARABIAN RANCHES III

---

JUNE

FLOOR PLANS

**EMAAR**

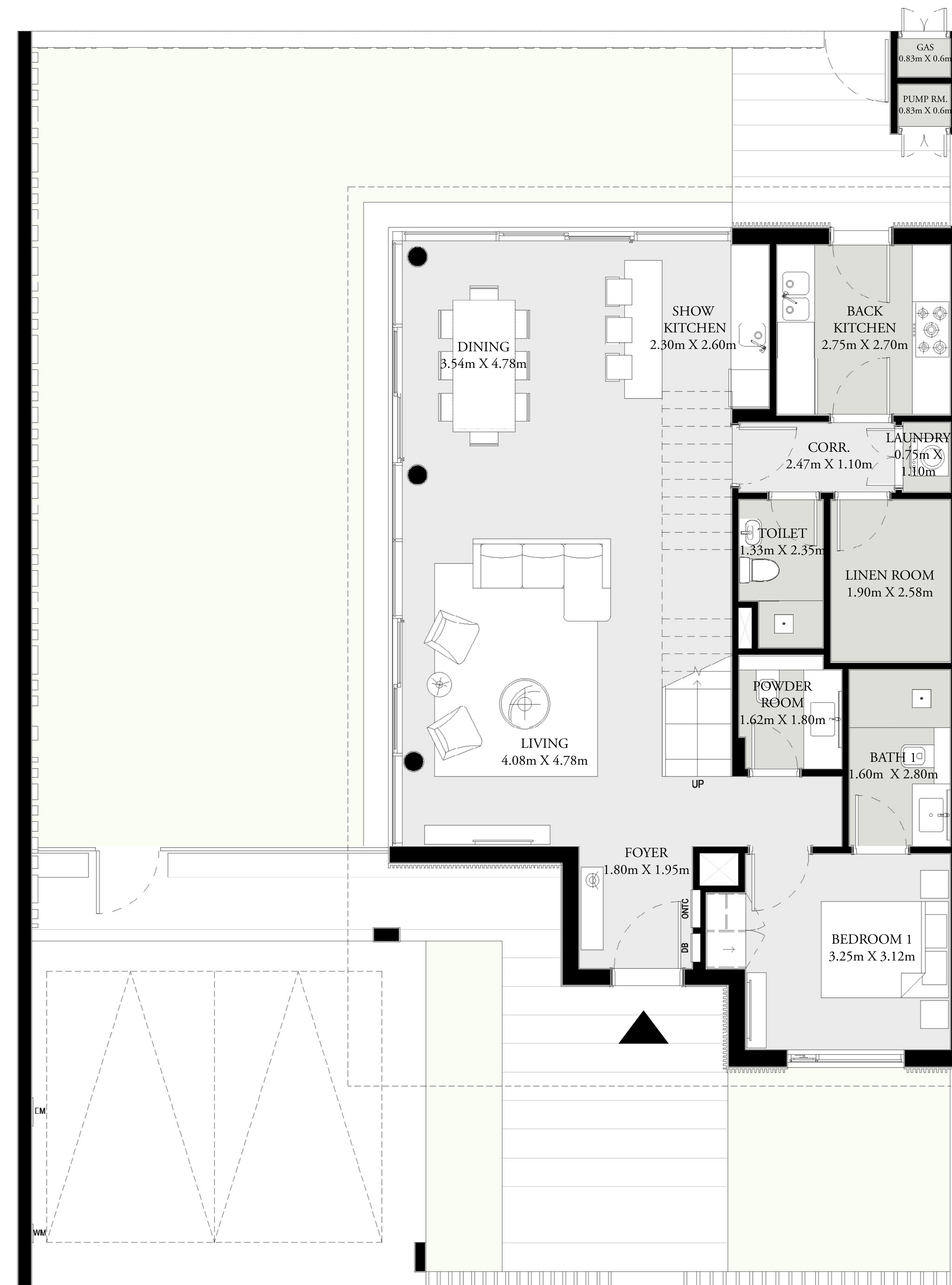
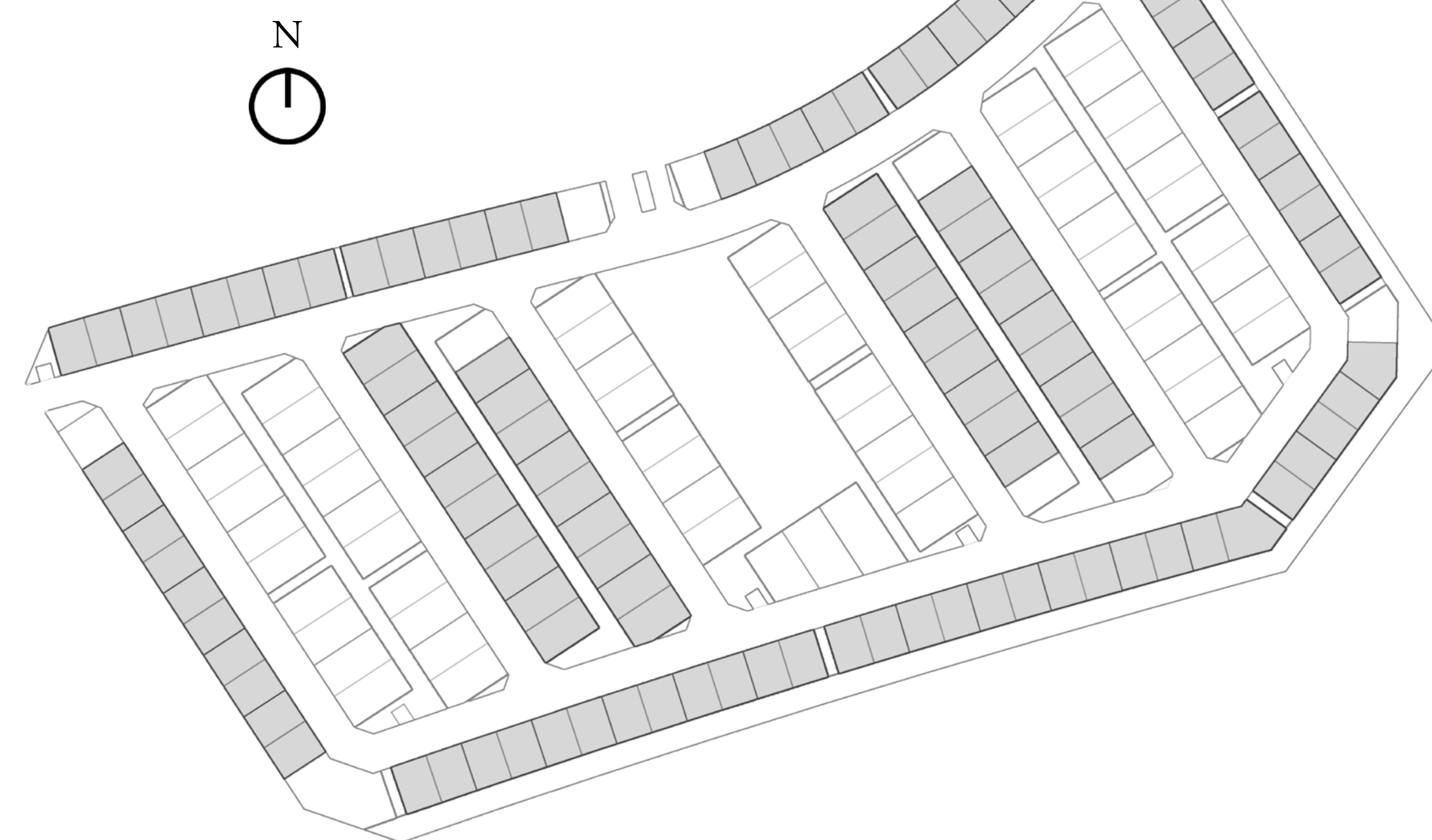
# ARABIAN RANCHES III

JUNE

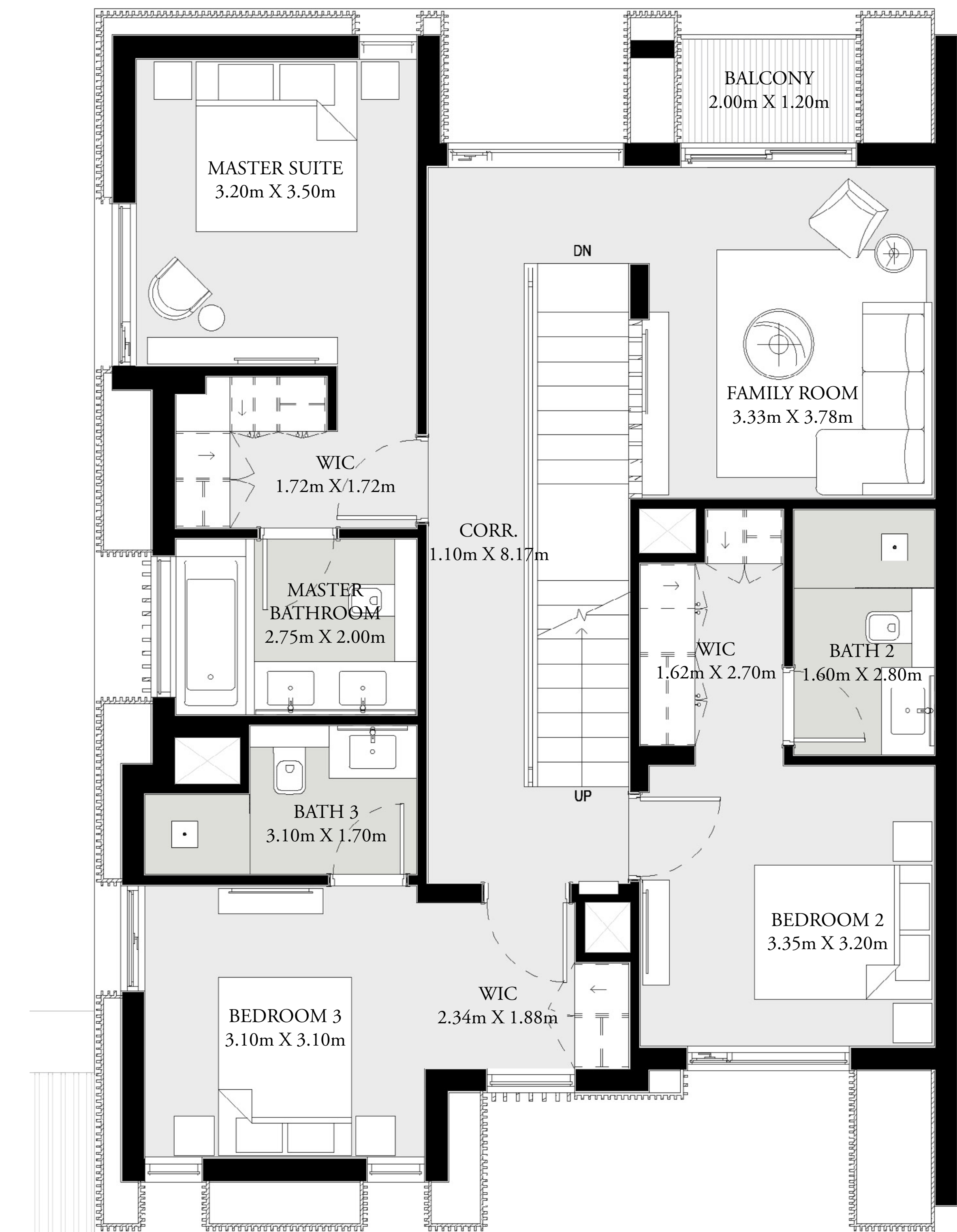
## 4 BEDROOM SEMI DETACHED VILLA TYPE 1

GROUND FLOOR	1,175 SQ.FT.	109.14 SQ.M.
FIRST FLOOR	1,199 SQ.FT.	111.42 SQ.M.
SECOND FLOOR	316 SQ.FT.	29.39 SQ.M.
CAR PORT	400 SQ.FT.	37.12 SQ.M.
TOTAL AREA	3,090 SQ.FT.	287.07 SQ.M.
ROOF TERRACE	354 SQ.FT.	32.87 SQ.M.

### KEY PLAN



GROUND FLOOR



FIRST FLOOR



SECOND FLOOR (ROOF)

FLOOR PLAN 1. All dimensions are in imperial and metric, and measured from finish to finish excluding construction tolerances. 2. All materials, dimensions, and drawings are approximate only. 3. Information is subject to change without notice, at developer's absolute discretion. 4. Actual area may vary from the stated area. 5. Drawings not to scale. 6. All images used are for illustrative purposes only and do not represent the actual size, features, specifications, fittings, and furnishings. 7. The developer reserves the right to make revisions / alterations, at its absolute discretion, without any liability whatsoever.

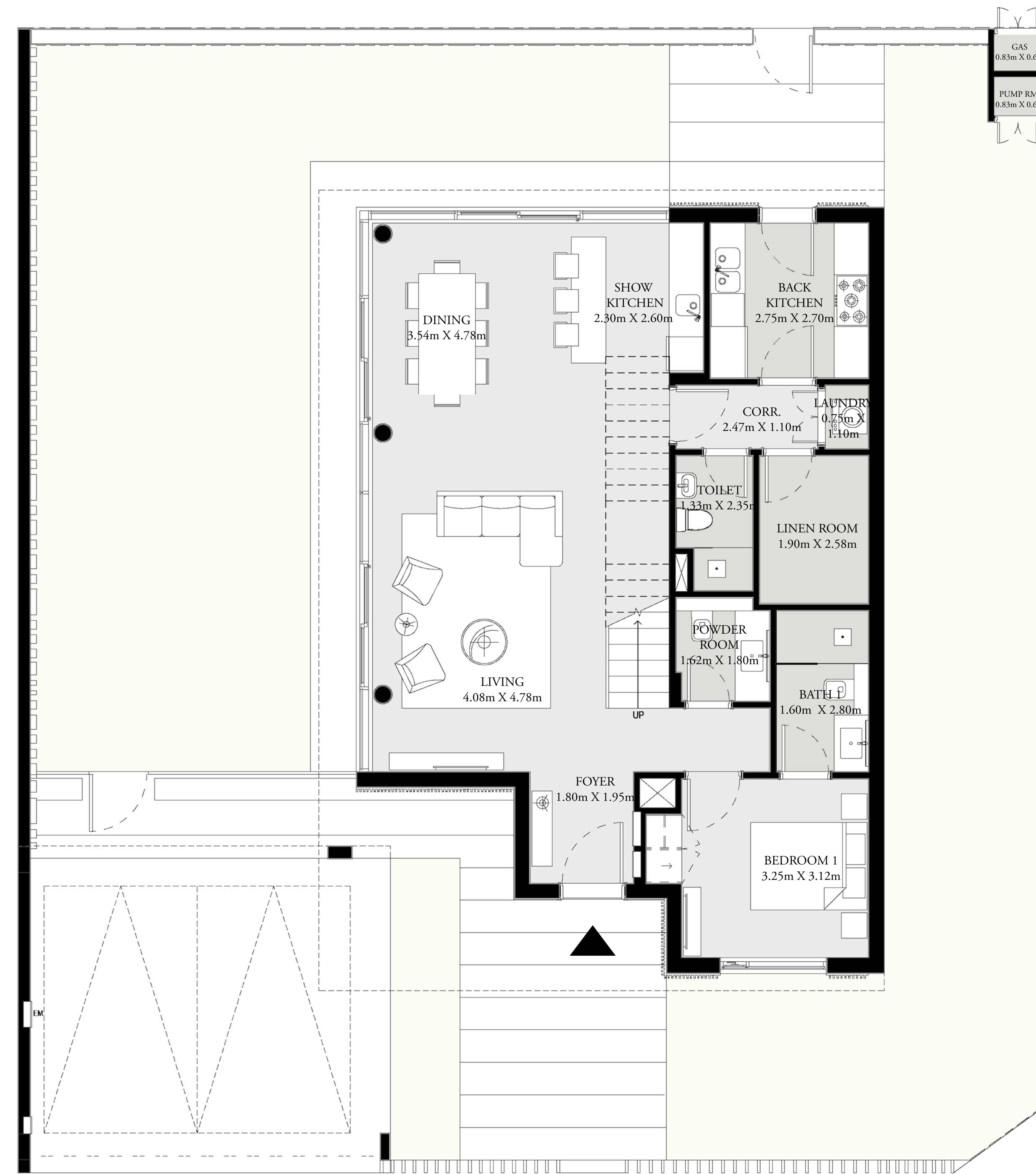
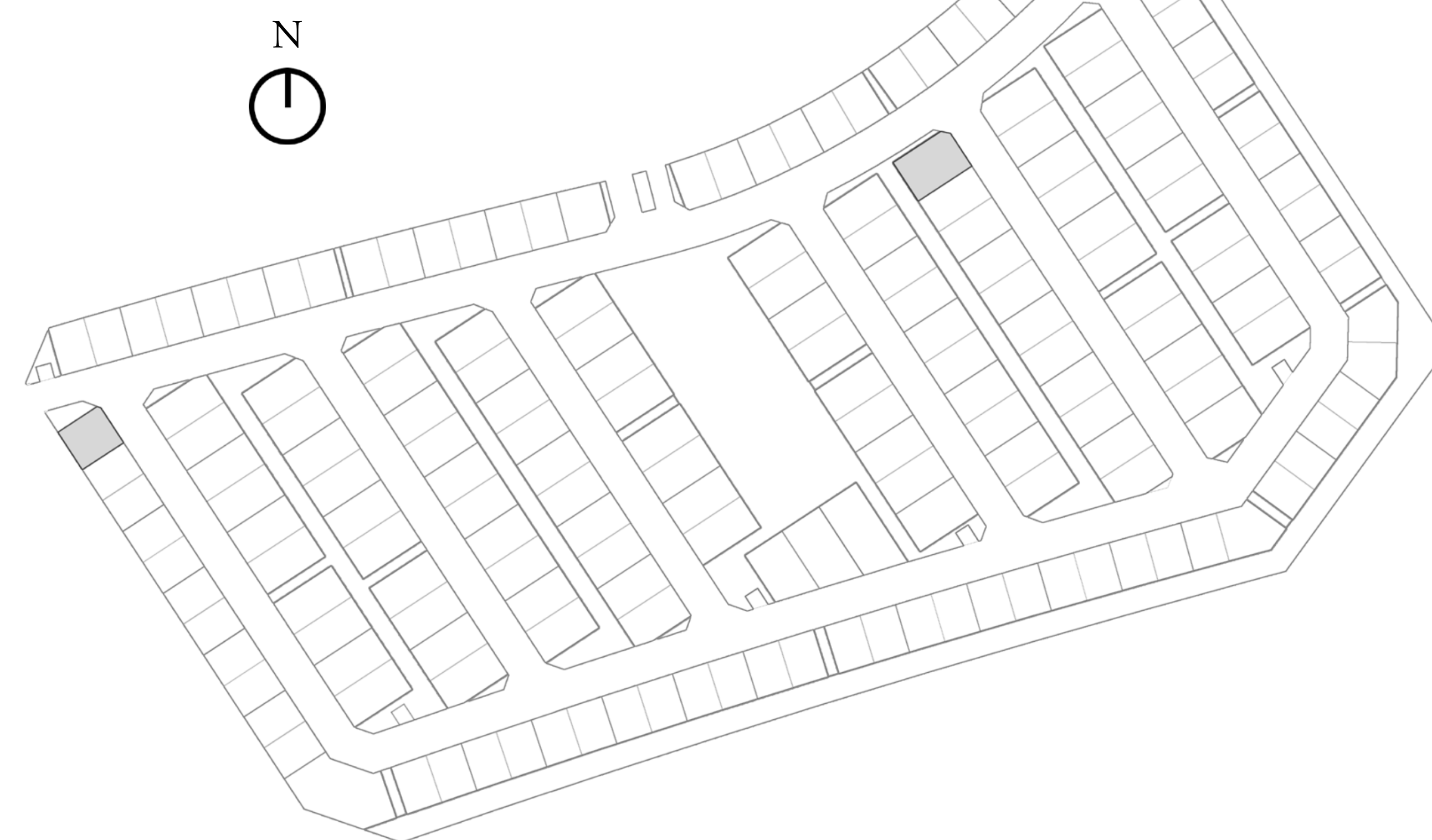
# ARABIAN RANCHES III

JUNE

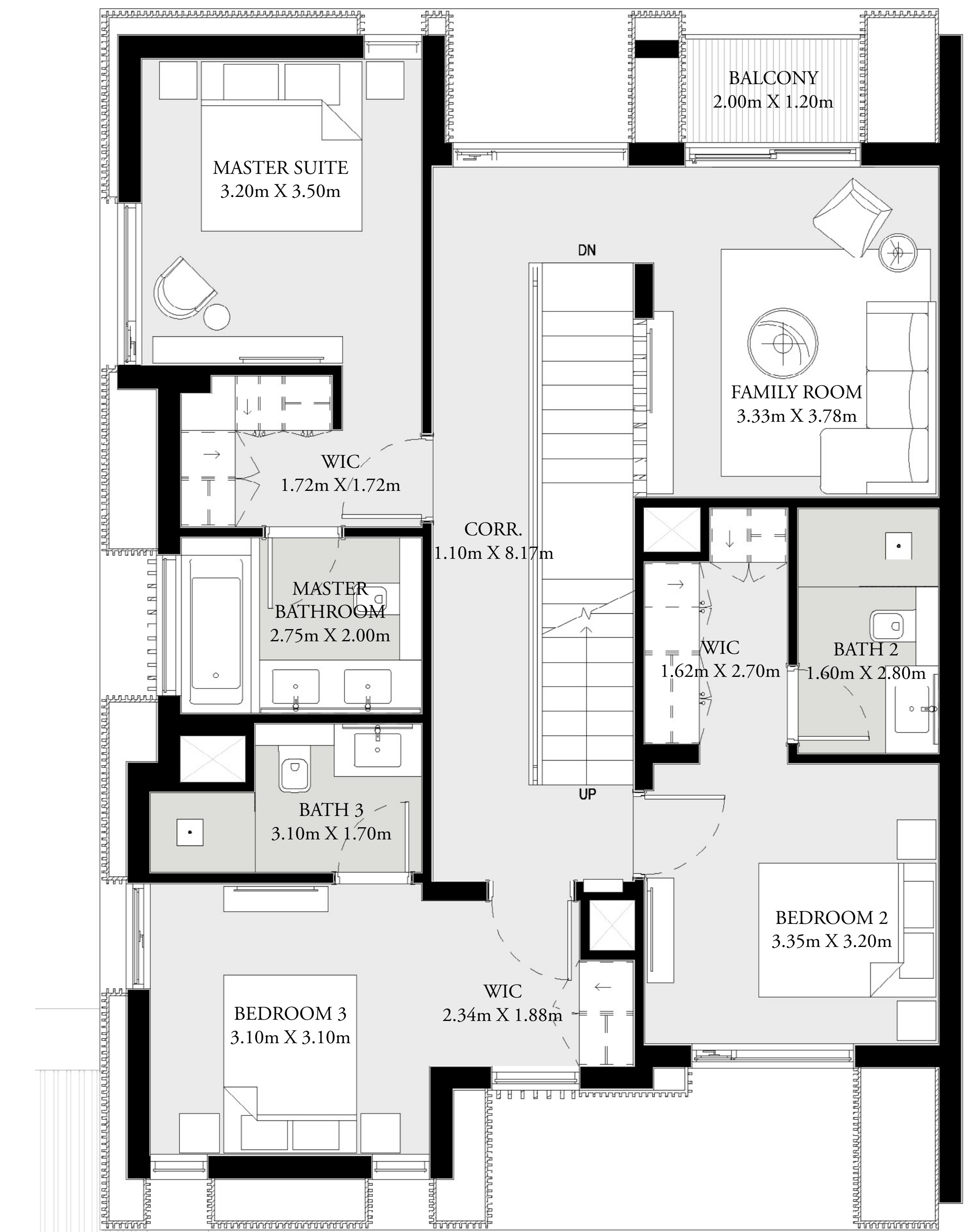
## 4 BEDROOM STAND ALONE VILLA TYPE 1

GROUND FLOOR	1,195 SQ.FT.	111.02 SQ.M.
FIRST FLOOR	1,214 SQ.FT.	112.74 SQ.M.
SECOND FLOOR	316 SQ.FT.	29.39 SQ.M.
CAR PORT	399 SQ.FT.	37.12 SQ.M.
TOTAL AREA	3,124 SQ.FT.	290.27 SQ.M.
ROOF TERRACE	354 SQ.FT.	32.87 SQ.M.

### KEY PLAN



GROUND FLOOR



FIRST FLOOR



SECOND FLOOR (ROOF)

FLOOR PLAN 1. All dimensions are in imperial and metric, and measured from finish to finish excluding construction tolerances. 2. All materials, dimensions, and drawings are approximate only. 3. Information is subject to change without notice, at developer's absolute discretion. 4. Actual area may vary from the stated area. 5. Drawings not to scale. 6. All images used are for illustrative purposes only and do not represent the actual size, features, specifications, fittings, and furnishings. 7. The developer reserves the right to make revisions / alterations, at its absolute discretion, without any liability whatsoever.

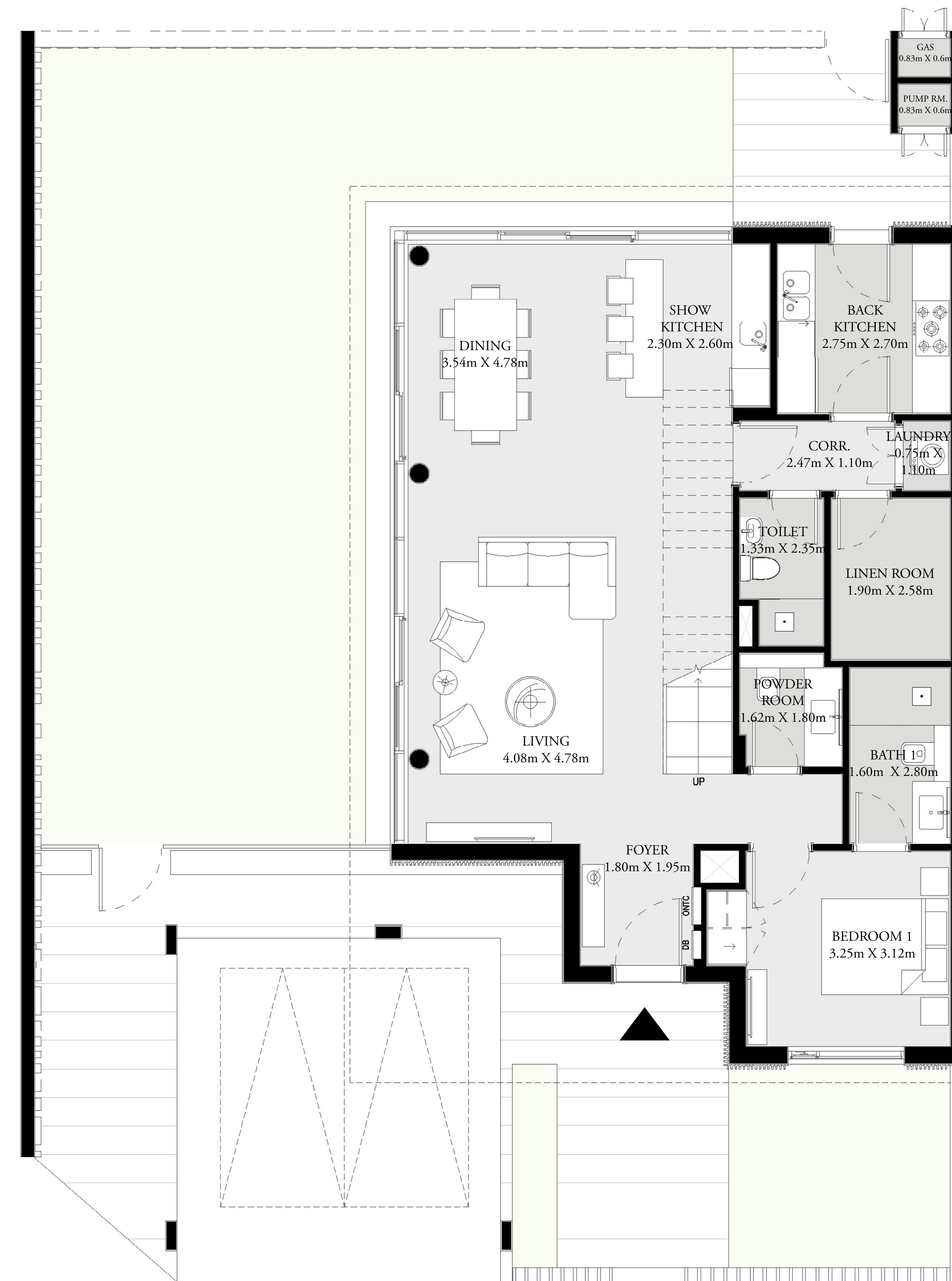
# ARABIAN RANCHES III

JUNE

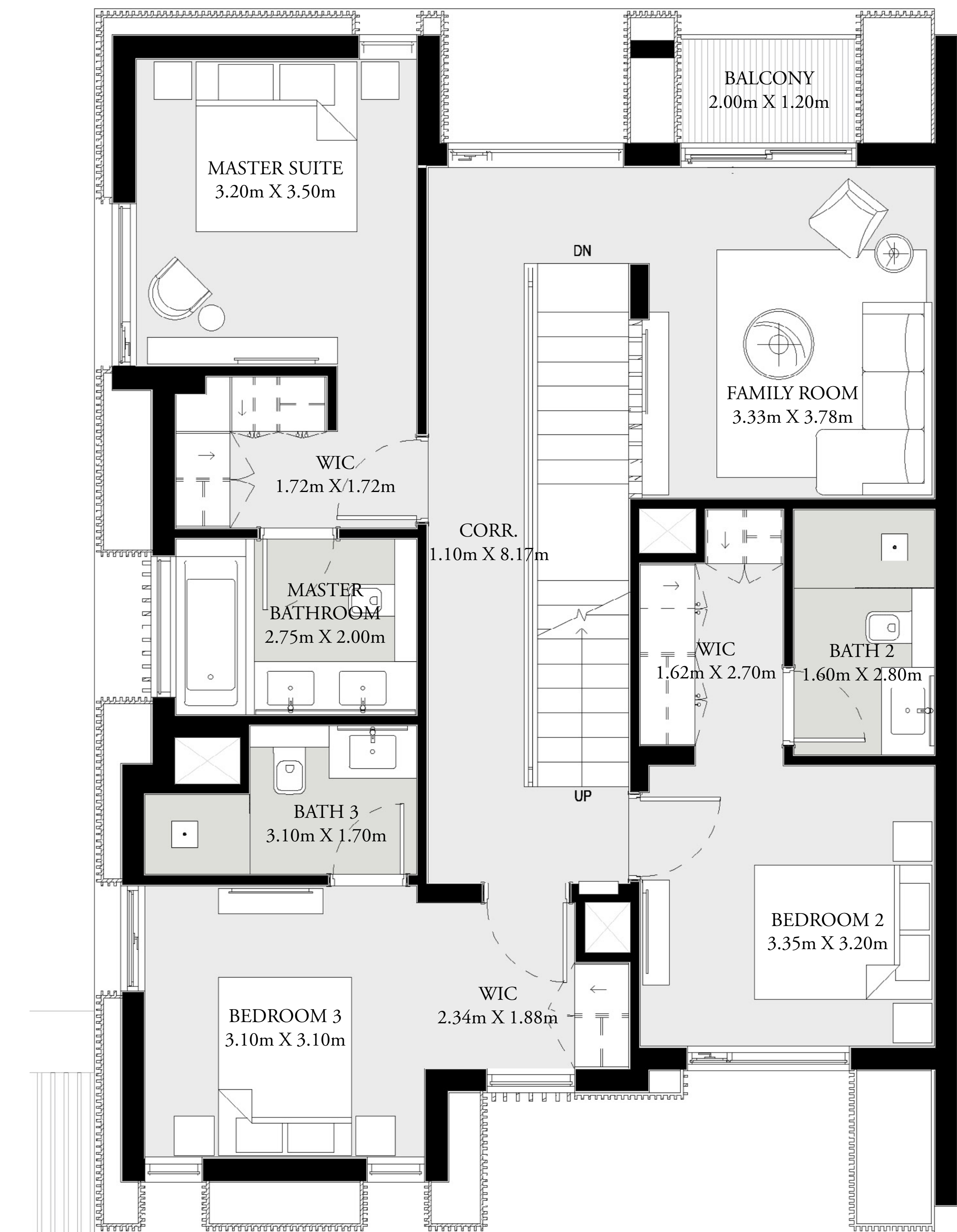
## 4 BEDROOM SEMI DETACHED VILLA TYPE 2

GROUND FLOOR	1,175 SQ.FT.	109.14 SQ.M.
FIRST FLOOR	1,199 SQ.FT.	111.42 SQ.M.
SECOND FLOOR	316 SQ.FT.	29.39 SQ.M.
CAR PORT	311 SQ.FT.	28.89 SQ.M.
TOTAL AREA	3,001 SQ.FT.	278.84 SQ.M.
ROOF TERRACE	354 SQ.FT.	32.87 SQ.M.

### KEY PLAN



GROUND FLOOR



FIRST FLOOR



SECOND FLOOR (ROOF)

FLOOR PLAN 1. All dimensions are in imperial and metric, and measured from finish to finish excluding construction tolerances. 2. All materials, dimensions, and drawings are approximate only. 3. Information is subject to change without notice, at developer's absolute discretion. 4. Actual area may vary from the stated area. 5. Drawings not to scale. 6. All images used are for illustrative purposes only and do not represent the actual size, features, specifications, fittings, and furnishings. 7. The developer reserves the right to make revisions / alterations, at its absolute discretion, without any liability whatsoever.

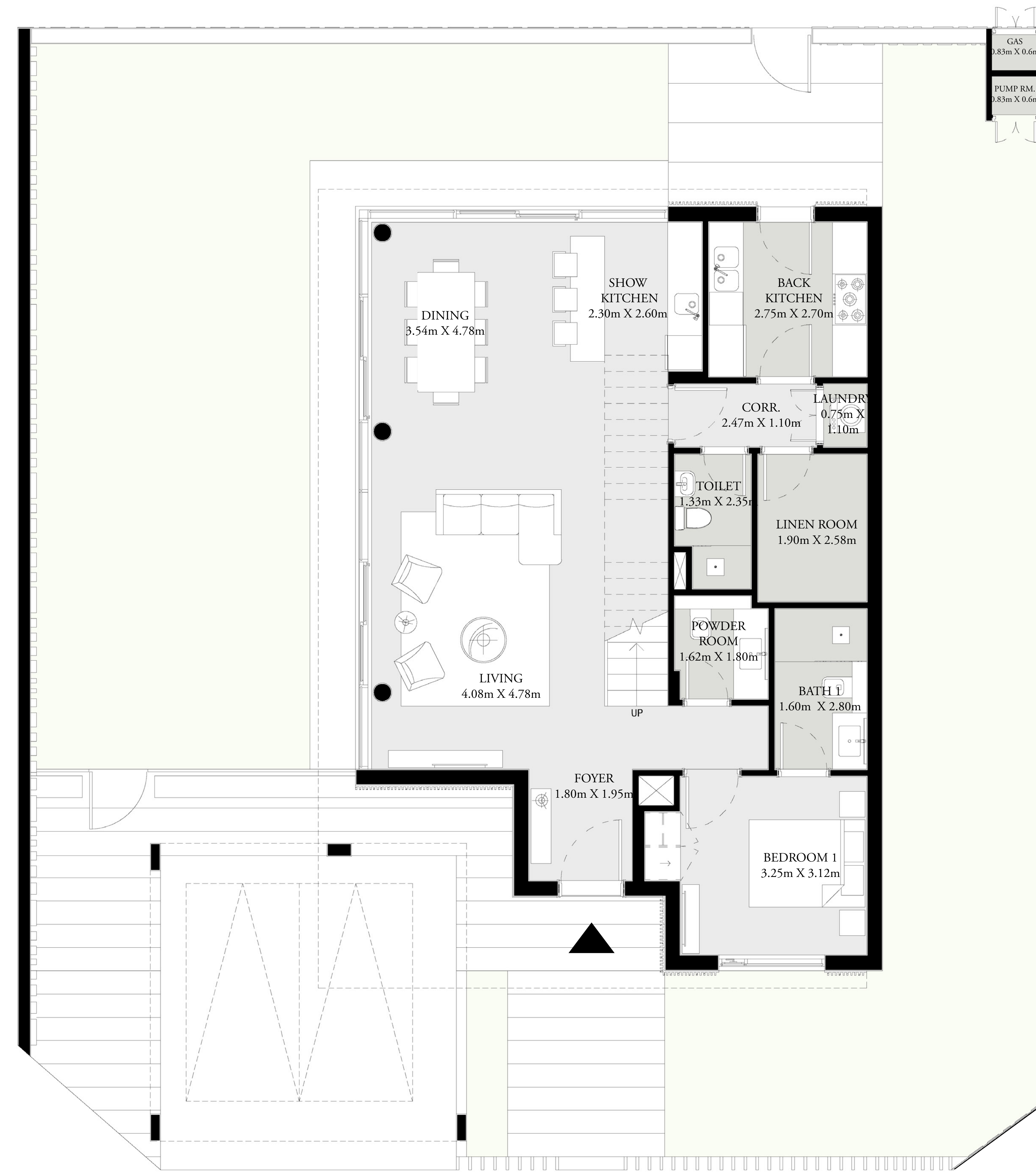
# ARABIAN RANCHES III

JUNE

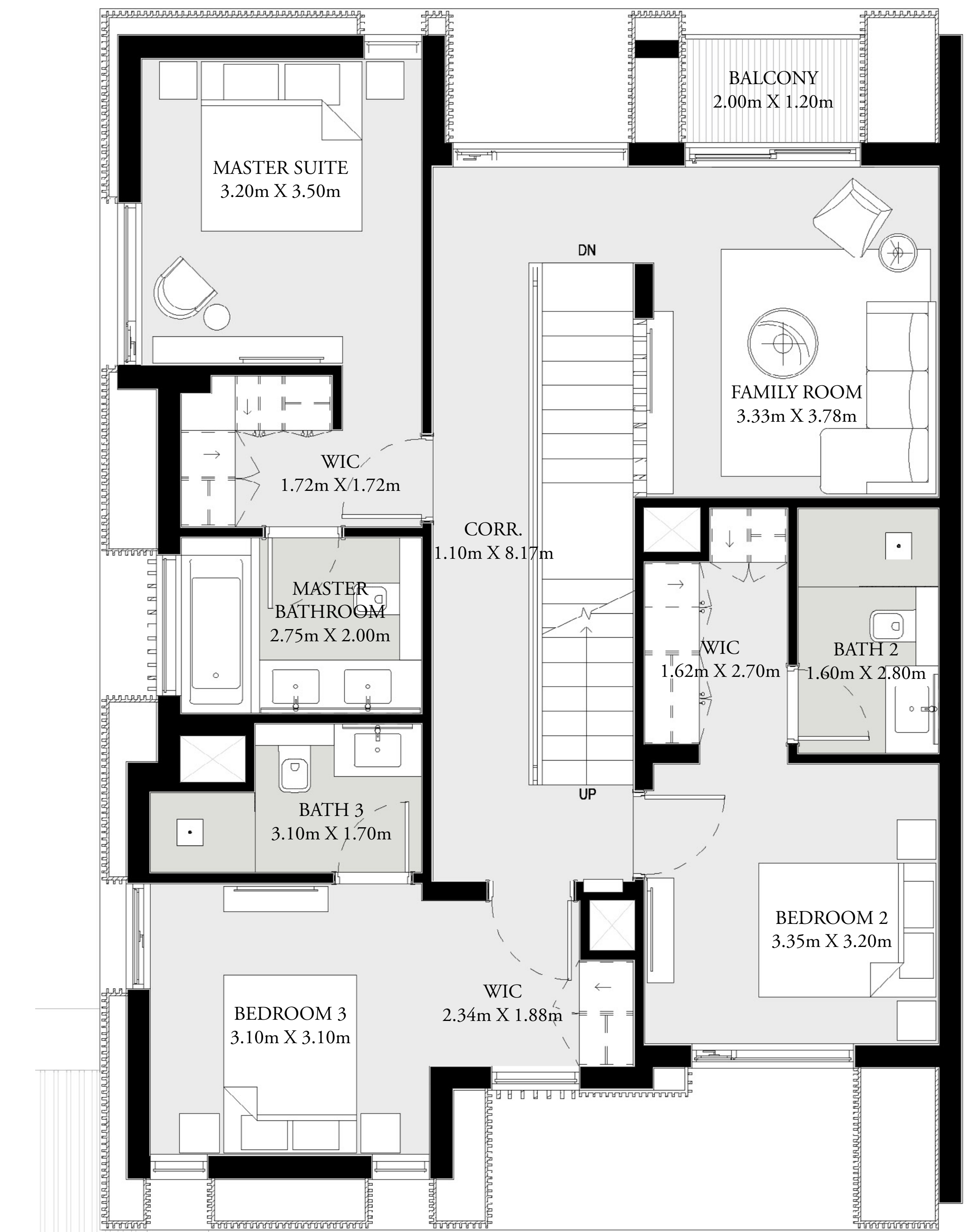
## 4 BEDROOM STAND ALONE VILLA TYPE 2

GROUND FLOOR	1,195 SQ.FT.	111.02 SQ.M.
FIRST FLOOR	1,214 SQ.FT.	112.74 SQ.M.
SECOND FLOOR	316 SQ.FT.	29.39 SQ.M.
CAR PORT	311 SQ.FT.	28.89 SQ.M.
TOTAL AREA	3,036 SQ.FT.	282.04 SQ.M.
ROOF TERRACE	354 SQ.FT.	32.87 SQ.M.

### KEY PLAN



GROUND FLOOR



FIRST FLOOR



SECOND FLOOR (ROOF)

FLOOR PLAN 1. All dimensions are in imperial and metric, and measured from finish to finish excluding construction tolerances. 2. All materials, dimensions, and drawings are approximate only. 3. Information is subject to change without notice, at developer's absolute discretion. 4. Actual area may vary from the stated area. 5. Drawings not to scale. 6. All images used are for illustrative purposes only and do not represent the actual size, features, specifications, fittings, and furnishings. 7. The developer reserves the right to make revisions / alterations, at its absolute discretion, without any liability whatsoever.

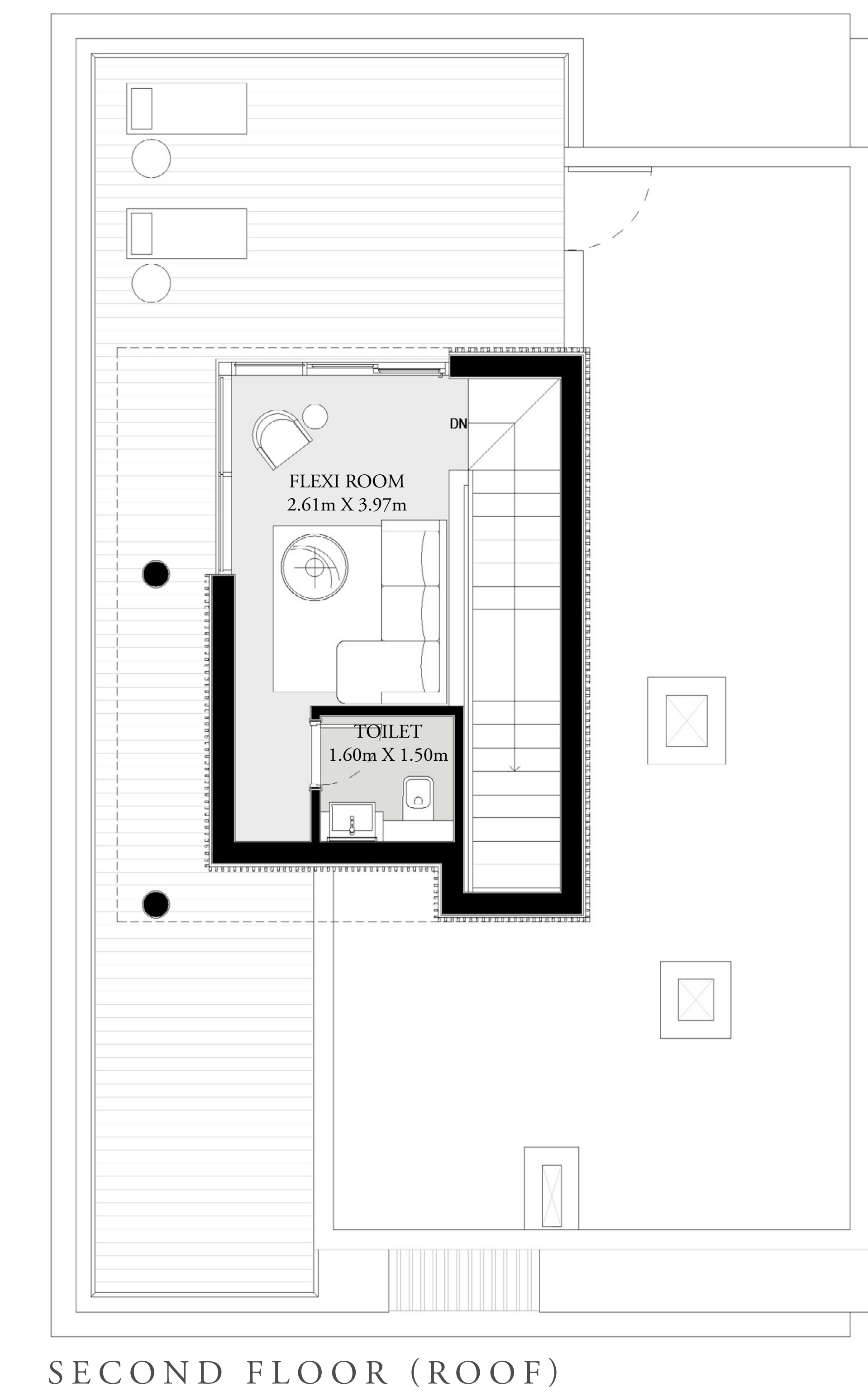
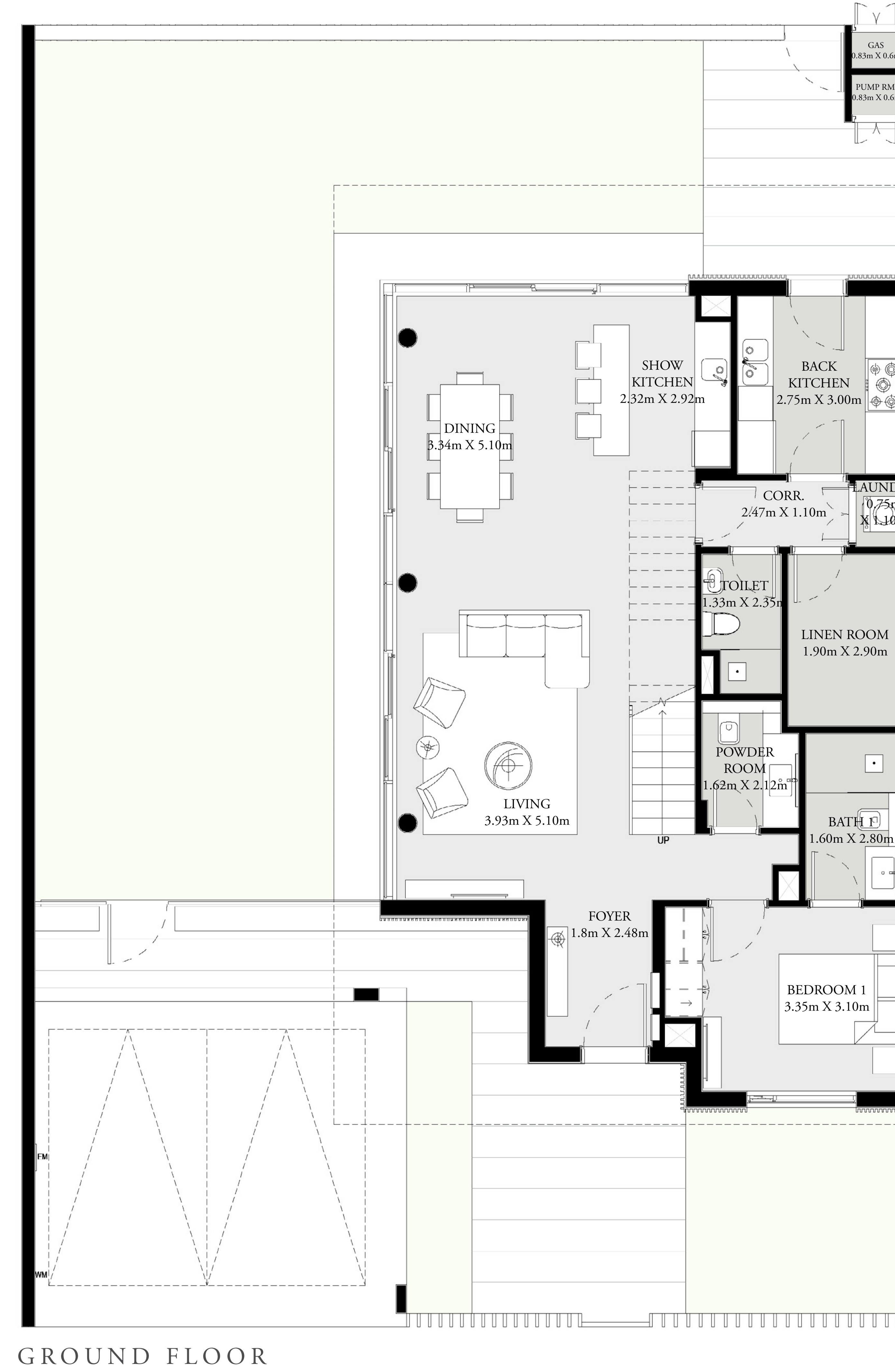
# ARABIAN RANCHES III

JUNE

## 5 BEDROOM SEMI DETACHED VILLA TYPE 1

GROUND FLOOR	1,236 SQ.FT.	114.87 SQ.M.
FIRST FLOOR	1,480 SQ.FT.	137.53 SQ.M.
SECOND FLOOR	302 SQ.FT.	28.07 SQ.M.
CAR PORT	402 SQ.FT.	37.22 SQ.M.
TOTAL AREA	3,420 SQ.FT.	317.69 SQ.M.
ROOF TERRACE	538 SQ.FT.	49.98 SQ.M.

### KEY PLAN



FLOOR PLAN 1. All dimensions are in imperial and metric, and measured from finish to finish excluding construction tolerances. 2. All materials, dimensions, and drawings are approximate only. 3. Information is subject to change without notice, at developer's absolute discretion. 4. Actual area may vary from the stated area. 5. Drawings not to scale. 6. All images used are for illustrative purposes only and do not represent the actual size, features, specifications, fittings, and furnishings. 7. The developer reserves the right to make revisions / alterations, at its absolute discretion, without any liability whatsoever.

# ARABIAN RANCHES III

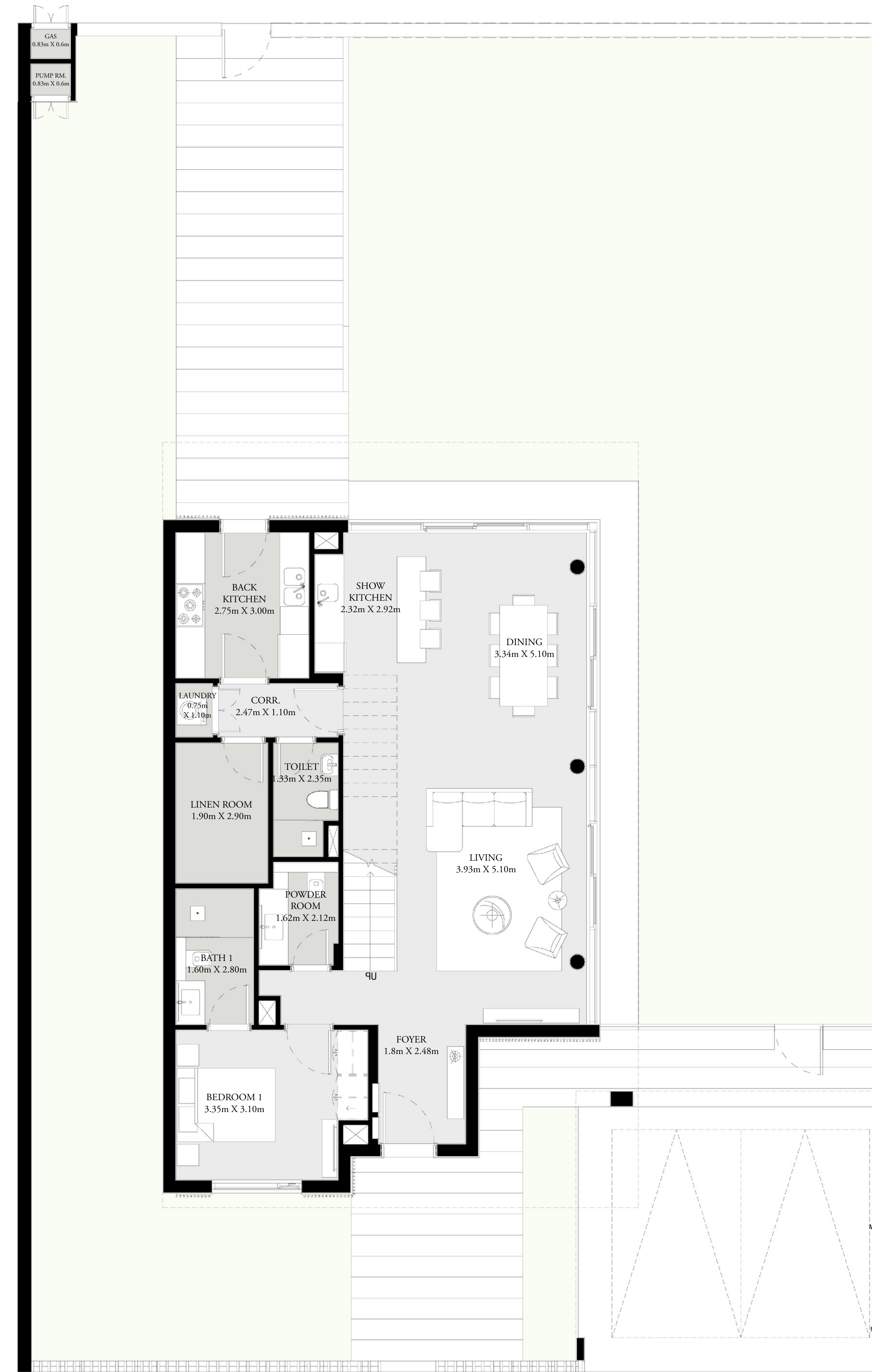
JUNE

## 5 BEDROOM STAND ALONE VILLA TYPE 1

GROUND FLOOR	1,258 SQ.FT.	116.83 SQ.M.
FIRST FLOOR	1,501 SQ.FT.	139.48 SQ.M.
SECOND FLOOR	302 SQ.FT.	28.07 SQ.M.
CAR PORT	401 SQ.FT.	37.22 SQ.M.
TOTAL AREA	3,462 SQ.FT.	321.60 SQ.M.

ROOF TERRACE	538 SQ.FT.	49.98 SQ.M.
--------------	------------	-------------

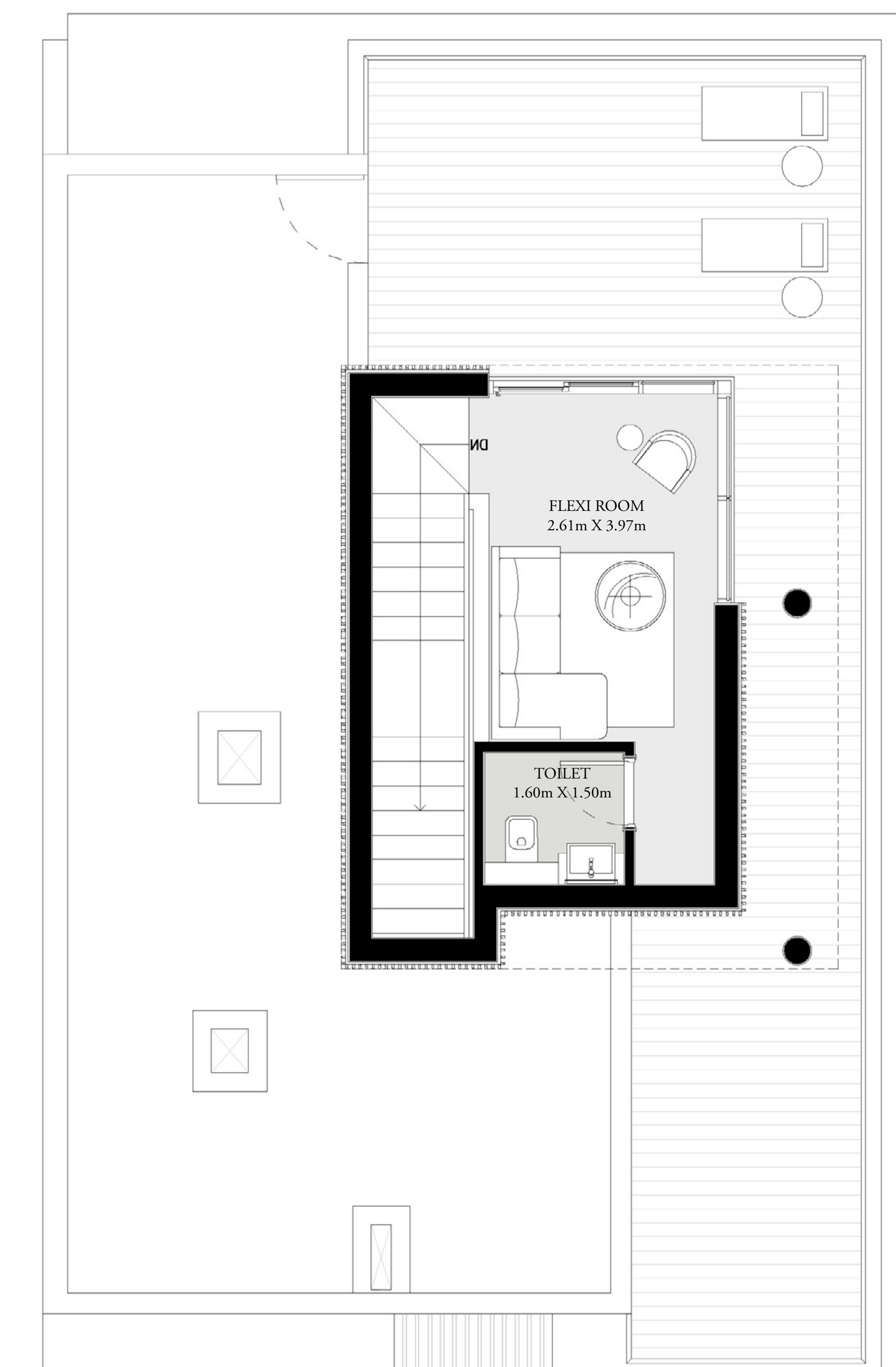
### KEY PLAN



GROUND FLOOR



FIRST FLOOR



SECOND FLOOR (ROOF)

FLOOR PLAN 1. All dimensions are in imperial and metric, and measured from finish to finish excluding construction tolerances. 2. All materials, dimensions, and drawings are approximate only. 3. Information is subject to change without notice, at developer's absolute discretion. 4. Actual area may vary from the stated area. 5. Drawings not to scale. 6. All images used are for illustrative purposes only and do not represent the actual size, features, specifications, fittings, and furnishings. 7. The developer reserves the right to make revisions / alterations, at its absolute discretion, without any liability whatsoever.

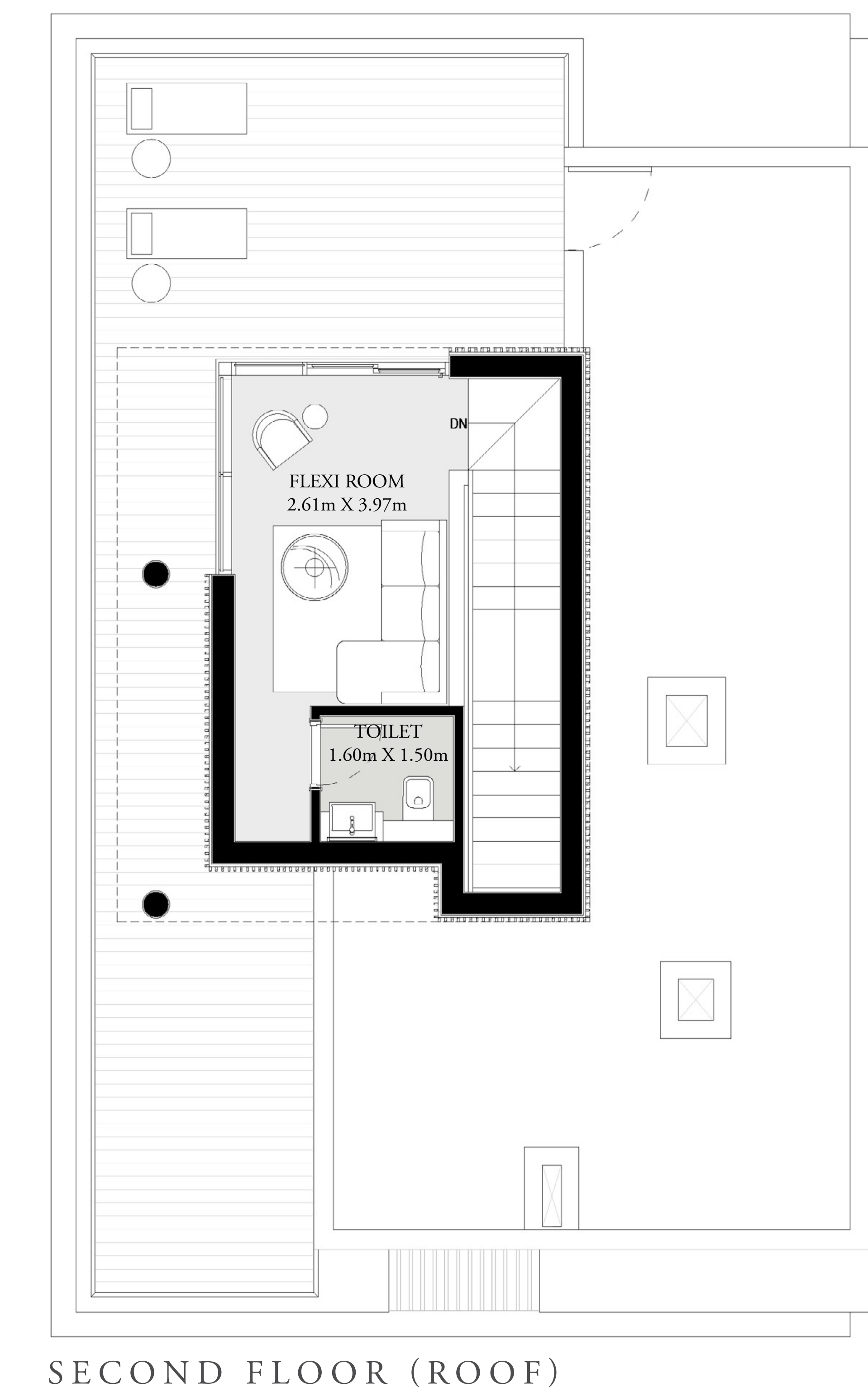
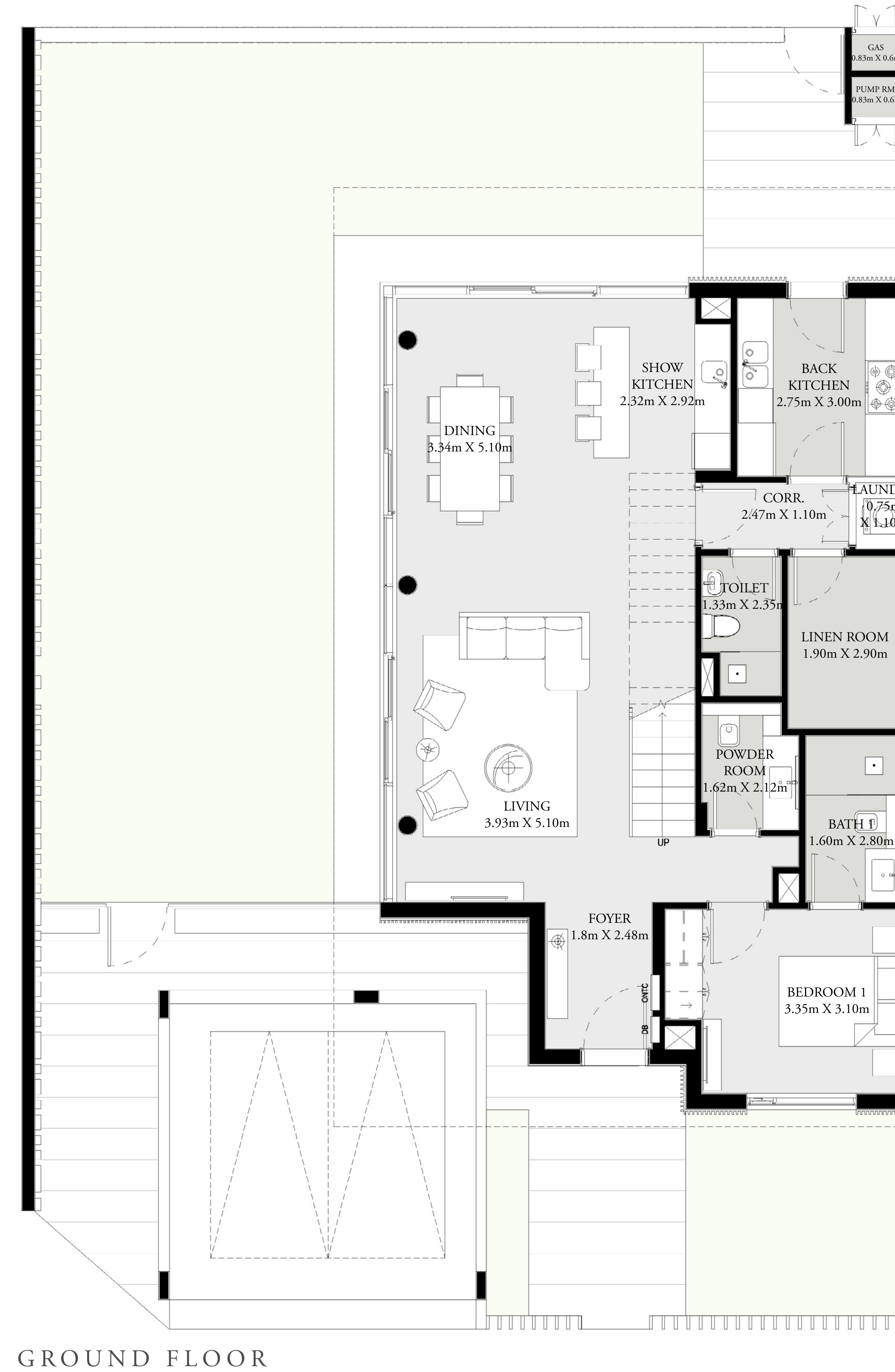
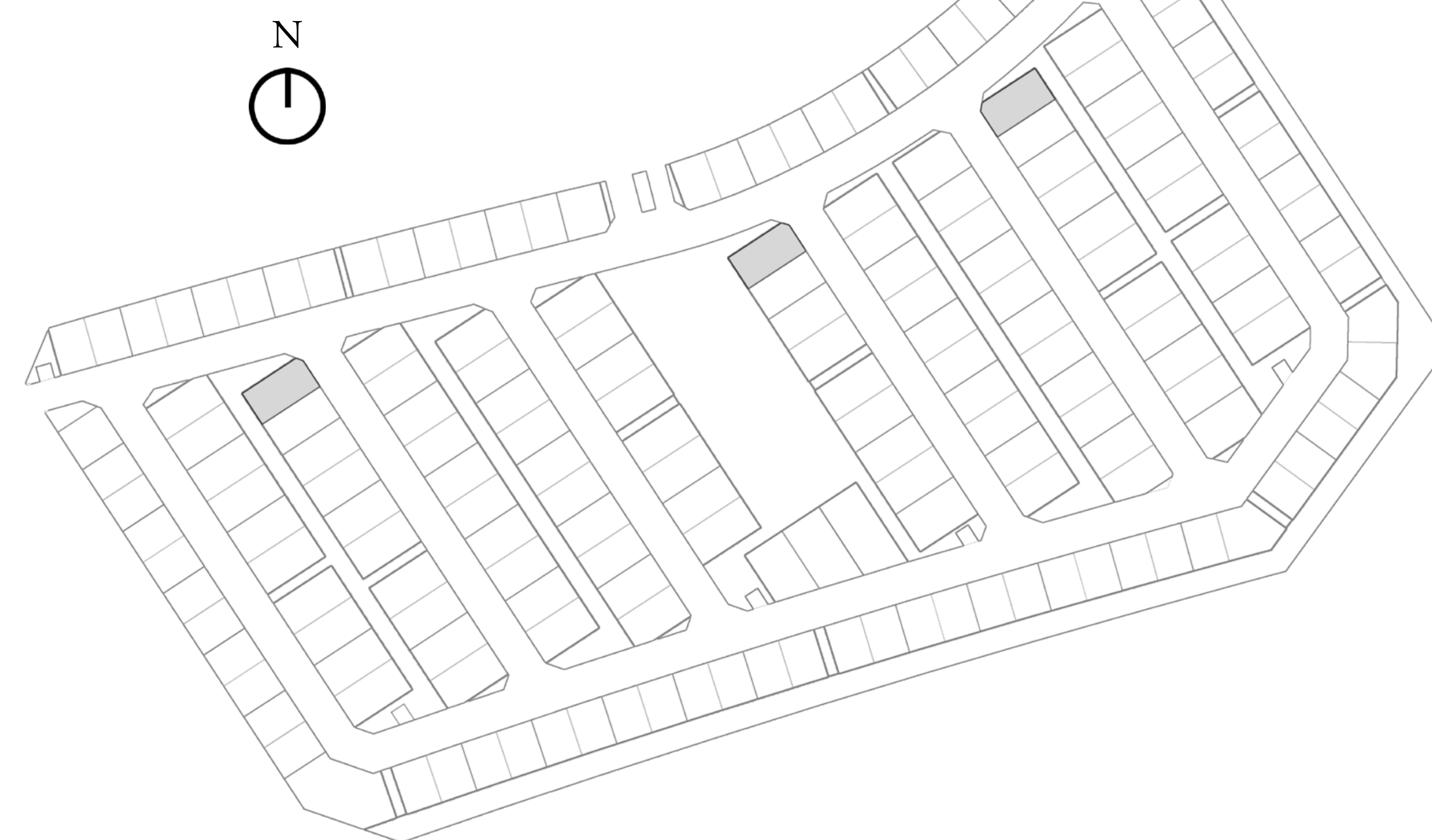
# ARABIAN RANCHES III

JUNE

## 5 BEDROOM SEMI DETACHED VILLA TYPE 2

GROUND FLOOR	1,236 SQ.FT.	114.87 SQ.M.
FIRST FLOOR	1,480 SQ.FT.	137.53 SQ.M.
SECOND FLOOR	302 SQ.FT.	28.07 SQ.M.
CAR PORT	313 SQ.FT.	28.97 SQ.M.
TOTAL AREA	3,331 SQ.FT.	309.44 SQ.M.
ROOF TERRACE	538 SQ.FT.	49.98 SQ.M.

### KEY PLAN



FLOOR PLAN 1. All dimensions are in imperial and metric, and measured from finish to finish excluding construction tolerances. 2. All materials, dimensions, and drawings are approximate only. 3. Information is subject to change without notice, at developer's absolute discretion. 4. Actual area may vary from the stated area. 5. Drawings not to scale. 6. All images used are for illustrative purposes only and do not represent the actual size, features, specifications, fittings, and furnishings. 7. The developer reserves the right to make revisions / alterations, at its absolute discretion, without any liability whatsoever.



# ARABIAN RANCHES III

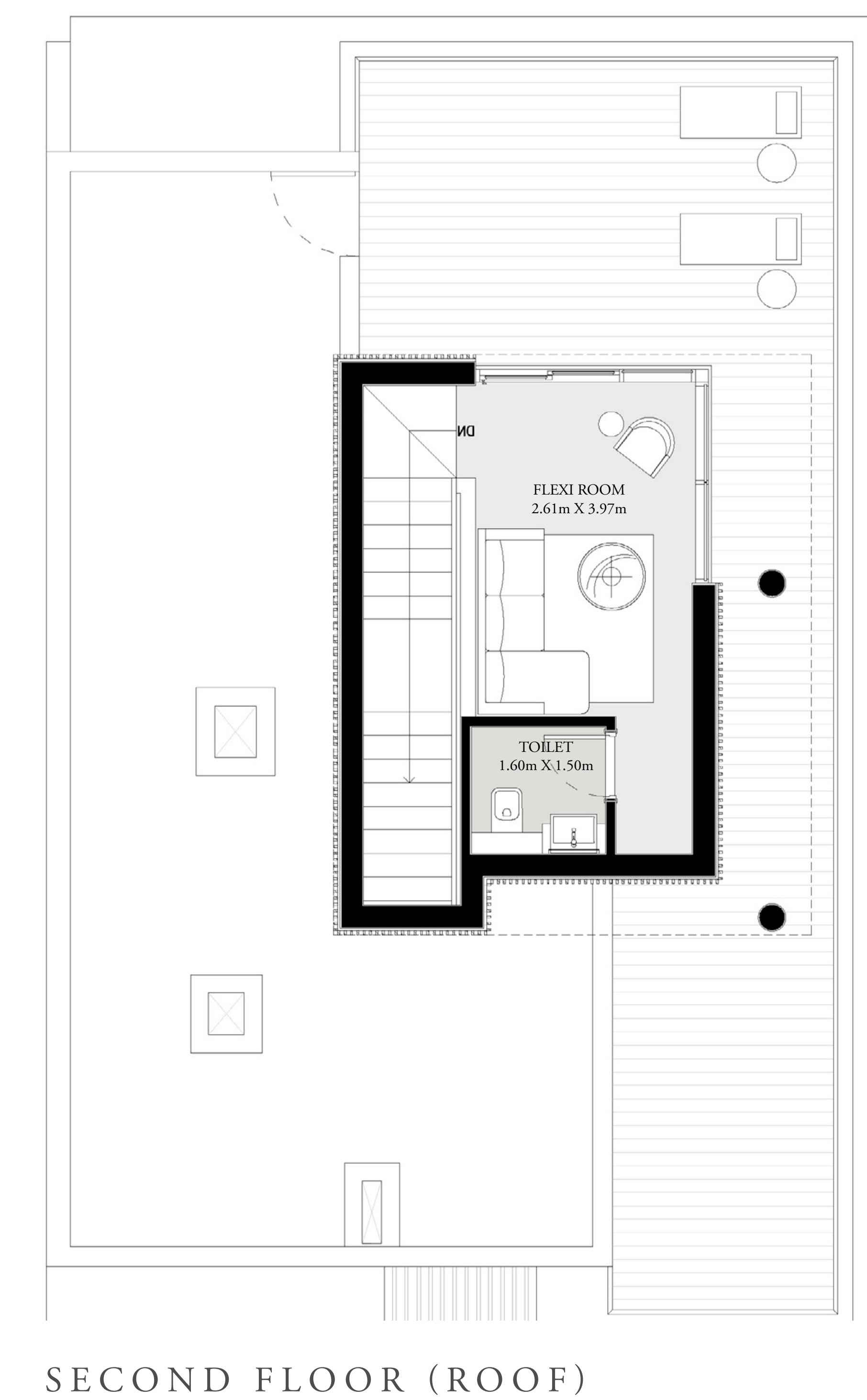
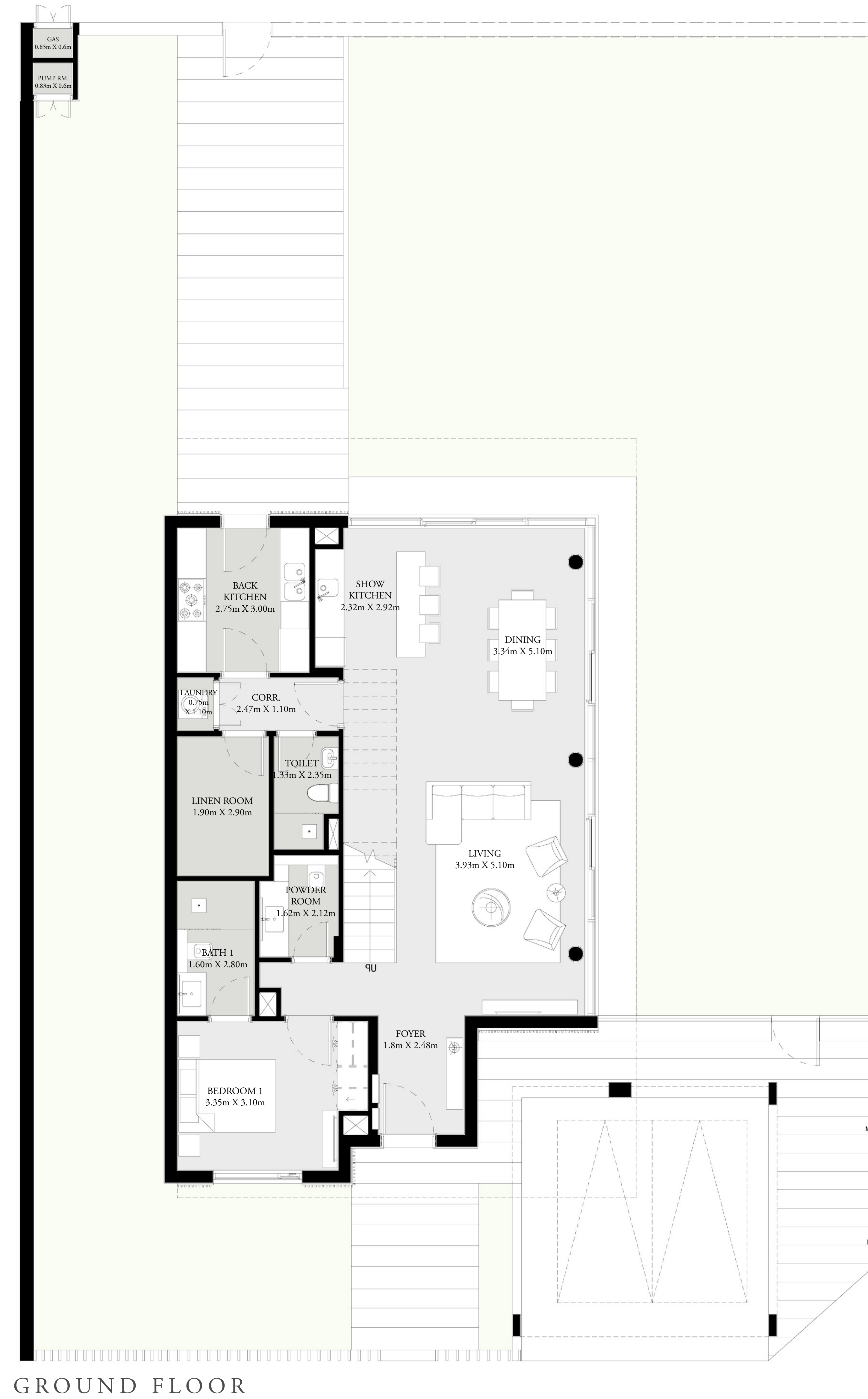
JUNE

## 5 BEDROOM STAND ALONE VILLA TYPE 2

GROUND FLOOR	1,258 SQ.FT.	116.83 SQ.M.
FIRST FLOOR	1,501 SQ.FT.	139.48 SQ.M.
SECOND FLOOR	302 SQ.FT.	28.07 SQ.M.
CAR PORT	312 SQ.FT.	28.97 SQ.M.
TOTAL AREA	3,373 SQ.FT.	313.35 SQ.M.

ROOF TERRACE	538 SQ.FT.	49.98 SQ.M.
--------------	------------	-------------

### KEY PLAN



FLOOR PLAN 1. All dimensions are in imperial and metric, and measured from finish to finish excluding construction tolerances. 2. All materials, dimensions, and drawings are approximate only. 3. Information is subject to change without notice, at developer's absolute discretion. 4. Actual area may vary from the stated area. 5. Drawings not to scale. 6. All images used are for illustrative purposes only and do not represent the actual size, features, specifications, fittings, and furnishings. 7. The developer reserves the right to make revisions / alterations, at its absolute discretion, without any liability whatsoever.

# haus&haus

For more information or to book a viewing tour get in touch  
with our Off Plan & Investment team today:

**+971 4 302 5800**

**info@hausandhaus.com**

**www.hausandhaus.com**

'Agency of the Year 2020 Dubai' – Voted by @bayut and dubizzle